

For Research Use Only

CoraLite® Plus 488-conjugated Cytokeratin 5 Monoclonal antibody

Catalog Number:CL488-66727



Basic Information

Catalog Number:

CL488-66727

Size:

100ul , Concentration: 1000 ug/ml by
Nanodrop;

Source:

Mouse

Isotype:

IgG1

Immunogen Catalog Number:

AG24184

GenBank Accession Number:

BC024292

GeneID (NCBI):

3852

UNIPROT ID:

P13647

Full Name:

keratin 5

Calculated MW:

590 aa, 62 kDa

Observed MW:

60 kDa

Purification Method:

Protein G purification

CloneNo.:

1A1C5

Recommended Dilutions:

IF-P 1:50-1:500

Excitation/Emission maxima
wavelengths:

493 nm / 522 nm

Applications

Tested Applications:

IF-P

Species Specificity:

Human, mouse, pig

Positive Controls:

IF-P : human oesophagus cancer tissue,

Background Information

Keratins are a large family of proteins that form the intermediate filament cytoskeleton of epithelial cells. Keratin expression is highly regulated, tissue specific, and varies according to cell-state. Type I keratins consist of acidic, low molecular weight proteins with MW ranging from 40 kDa (KRT19) to 64 kDa (KRT9). Type 2 keratins consist of basic or neutral, high molecular weight proteins with MW from 52 kDa (KRT8) to 67 kDa (KRT18). Keratin 5, one 58-kD type II keratin, is coexpressed with a 50-kD keratin 14 in stratified squamous epithelia. Keratin 5, one 58-kD type II keratin, is coexpressed with a 50-kD tyk14 in stratified squamous epithelia.

Storage

Storage:

Store at -20°C. Avoid exposure to light. Stable for one year after shipment.

Storage Buffer:

PBS with 50% Glycerol, 0.05% Proclin300, 0.5% BSA, pH 7.3.

Aliquoting is unnecessary for -20°C storage

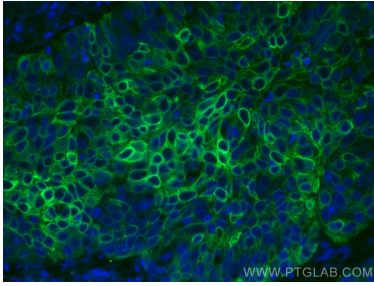
For technical support and original validation data for this product please contact:

T: 1 (888) 4PTGLAB (1-888-478-4522) (toll free
in USA), or 1(312) 455-8498 (outside USA)

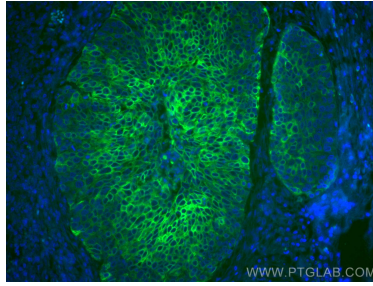
E: proteintech@ptglab.com
W: ptglab.com

This product is exclusively available under Proteintech Group brand and is not available to purchase from any other manufacturer.

Selected Validation Data



Immunofluorescent analysis of (4% PFA) fixed human oesophagus cancer tissue using CoraLite® Plus 488 Cytokeratin 5 antibody (CL488-66727, Clone: 1A1C5) at dilution of 1:200.



Immunofluorescent analysis of (4% PFA) fixed human oesophagus cancer tissue using CoraLite® Plus 488 Cytokeratin 5 antibody (CL488-66727, Clone: 1A1C5) at dilution of 1:200.