

For Research Use Only

# CoraLite® Plus 488-conjugated IL-1 beta Monoclonal antibody



Catalog Number: CL488-66737

## Basic Information

<b>Catalog Number:</b> CL488-66737	<b>GenBank Accession Number:</b> BC008678	<b>Purification Method:</b> Protein G purification
<b>Size:</b> 100ul , Concentration: 1000 µg/ml by Nanodrop;	<b>GeneID (NCBI):</b> 3553	<b>CloneNo.:</b> 2A1B4
<b>Source:</b> Mouse	<b>Full Name:</b> interleukin 1, beta	<b>Excitation/Emission maxima wavelengths:</b> 493 nm / 522 nm
<b>Isotype:</b> IgG1	<b>Calculated MW:</b> 269 aa, 31 kDa	
<b>Immunogen Catalog Number:</b> AG26030	<b>Observed MW:</b> 35 kDa	

## Applications

**Tested Applications:**  
FC (Intra)

**Species Specificity:**  
Human

## Background Information

Interleukin-1, produced mainly by blood monocytes, mediates the panoply of host reactions collectively known as acute phase response. It is identical to endogenous pyrogen. The multiple biologic activities that define IL1 are properties of a 15- to 18-kD protein that is derived from a 30- to 35-kD precursor. Interleukin 1 $\beta$  (IL-1B) is a member of the interleukin 1 cytokine family. It is a pro-inflammatory cytokine against infection, playing an important role in the pathogenesis of cancers. It signals through various adaptor proteins and kinases that lead to activation of numerous downstream targets. The expression level of IL-1B is very low.

## Storage

**Storage:**  
Store at -20°C. Avoid exposure to light. Stable for one year after shipment.

**Storage Buffer:**  
PBS with 50% Glycerol, 0.05% Proclin300, 0.5% BSA, pH 7.3.

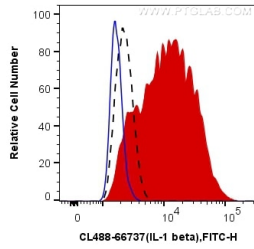
Aliquoting is unnecessary for -20°C storage

\*\*\* 20ul sizes contain 0.1% BSA

For technical support and original validation data for this product please contact:  
T: 1 (888) 4PTGLAB (1-888-478-4522) (toll free in USA), or 1(312) 455-8498 (outside USA) E: proteintech@ptglab.com W: ptglab.com

This product is exclusively available under Proteintech Group brand and is not available to purchase from any other manufacturer.

## Selected Validation Data



1X10<sup>6</sup> THP-1 cells untreated (dashed lines) or treated with LPS (red) were intracellularly stained with 0.4 ug CoraLite® Plus 488 Anti-Human IL-1 beta (CL488-66737, Clone:2A1B4) (red), or 0.4 ug Control Antibody (blue). Cells were fixed with 4% PFA and permeabilized with Flow Cytometry Perm Buffer (PF00011-C).