

For Research Use Only

CoraLite® Plus 488-conjugated ARL13B Monoclonal antibody

Catalog Number:CL488-66739



Basic Information

Catalog Number: CL488-66739	GenBank Accession Number: BC094725	Purification Method: Protein A purification
Size: 100ul , Concentration: 1000 ug/ml by Nanodrop;	GeneID (NCBI): 200894	CloneNo.: 1H6C3
Source: Mouse	UNIPROT ID: Q3SXY8	Recommended Dilutions: IF/ICC 1:50-1:500
Isotype: IgG2a	Full Name: ADP-ribosylation factor-like 13B	Excitation/Emission maxima wavelengths: 493 nm / 522 nm
Immunogen Catalog Number: AG12031	Calculated MW: 48 kDa	
	Observed MW: 60 kDa	

Applications

Tested Applications: IF/ICC	Positive Controls: IF/ICC : hTERT-RPE1 cells, MDCK cells
Species Specificity: Human, Canine	

Background Information

ARL13B, also named as ARL2L1, is a small ciliary G protein of the Ras superfamily. Localized in the cilia, it is required for cilium biogenesis and sonic hedgehog signaling. Defects in ARL13B are the cause of Joubert syndrome (JS) which is an autosomal recessive disorder characterized by a distinctive cerebellar malformation (PMID: 19906870). Arl13b is predicted to be a 48 kDa protein, and the 60 kDa band is likely to represent a modified form of Arl13b. ARL13B can be used to mark the cilia (PMID:22072986).

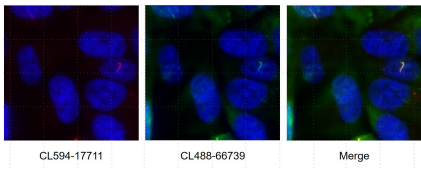
Storage

Storage:
Store at -20°C. Avoid exposure to light. Stable for one year after shipment.
Storage Buffer:
PBS with 50% Glycerol, 0.05% Proclin300, 0.5% BSA, pH 7.3.
Aliquoting is unnecessary for -20°C storage

For technical support and original validation data for this product please contact:
T: 1 (888) 4PTGLAB (1-888-478-4522) (toll free in USA), or 1(312) 455-8498 (outside USA)
E: proteintech@ptglab.com
W: ptglab.com

This product is exclusively available under Proteintech Group brand and is not available to purchase from any other manufacturer.

Selected Validation Data



Immunofluorescent analysis of (4% PFA) fixed hTERT-RPE1 cells using CoraLite® Plus 488 ARL13B antibody (CL488-66739, Clone: 1H6C3) at dilution of 1:200.