

For Research Use Only

CoraLite® Plus 488-conjugated SRF Monoclonal antibody



Catalog Number: CL488-66742

Featured Product

Basic Information

Catalog Number: CL488-66742	GenBank Accession Number: BC048211	Purification Method: Protein A purification
Size: 100ul , Concentration: 1000 µg/ml by Nanodrop;	GeneID (NCBI): 6722	CloneNo.: 1G8F4
Source: Mouse	Full Name: serum response factor (c-fos serum response element-binding transcription factor)	Recommended Dilutions: IF 1:50-1:500
IsoType: IgG2a	Calculated MW: 508 aa, 52 kDa	Excitation/Emission maxima wavelengths: 488 nm / 515 nm
Immunogen Catalog Number: AG10386		

Applications

Tested Applications: IF	Positive Controls: IF : HepG2 cells,
Species Specificity: Human	

Background Information

Serum response factor (SRF) is a transcription factor that binds the serum response element (SRE), a sequence that mediates the transient response of many cellular genes to growth stimulation. SRF is required for cardiac differentiation and maturation due to the role in cardiac cell growth and muscle gene regulation. The full-length SRF protein is 67 kDa and molecular weight of cleaved fragment is 50 kDa and 20 kDa (PMID: 21769134).

Storage

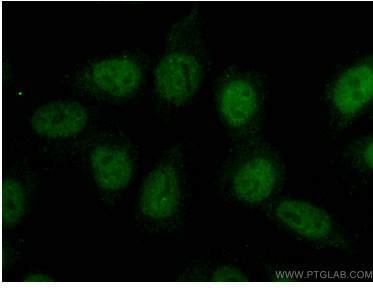
Storage:
Store at -20°C. Avoid exposure to light. Stable for one year after shipment.
Storage Buffer:
PBS with 50% Glycerol, 0.05% Proclin300, 0.5% BSA, pH 7.3.
Aliquoting is unnecessary for -20°C storage

*** 20ul sizes contain 0.1% BSA

For technical support and original validation data for this product please contact:
T: 1 (888) 4PTGLAB (1-888-478-4522) (toll free in USA), or 1(312) 455-8498 (outside USA)
E: proteintech@ptglab.com
W: ptglab.com

This product is exclusively available under Proteintech Group brand and is not available to purchase from any other manufacturer.

Selected Validation Data



Immunofluorescent analysis of (4% PFA) fixed HepG2 cells using CoraLite® Plus 488-conjugated SRF antibody (CL488-66742, Clone: 1G8F4) at dilution of 1:100.