

For Research Use Only

CoraLite® Plus 488-conjugated PLA2G4D Monoclonal antibody



Catalog Number:CL488-66752

Basic Information

Catalog Number: CL488-66752	GenBank Accession Number: BC034571	Purification Method: Protein G purification
Size: 100ul , Concentration: 1000 µg/ml by Nanodrop;	GeneID (NCBI): 283748	CloneNo.: 2E2A10
Source: Mouse	Full Name: phospholipase A2, group IVD (cytosolic)	Recommended Dilutions: IF 1:50-1:500
Isotype: IgG1	Calculated MW: 818 aa, 92 kDa	Excitation/Emission maxima wavelengths: 488 nm / 515 nm
Immunogen Catalog Number: AG4178	Observed MW: 92 kDa	

Applications

Tested Applications: IF	Positive Controls: IF : HepG2 cells,
Species Specificity: Human	

Background Information

PLA2G4D(Cytosolic phospholipase A2 delta) belongs to the phospholipase A2 enzyme family,catalyzes the hydrolysis of glycerophospholipids at the sn-2 position and then liberate free fatty acids and lysophospholipids.PLA2G4D expression is specifically upregulated in the upper epidermis of patients with inflammatory skin diseases(PMID:14709560).

Storage

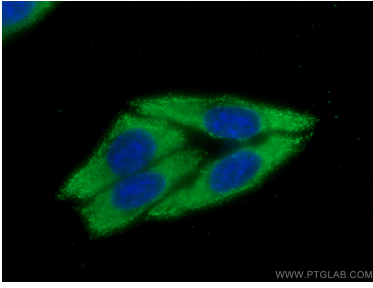
Storage:
Store at -20°C. Avoid exposure to light. Stable for one year after shipment.
Storage Buffer:
PBS with 50% Glycerol, 0.05% Proclin300, 0.5% BSA, pH 7.3.
Aliquoting is unnecessary for -20°C storage

*** 20ul sizes contain 0.1% BSA

For technical support and original validation data for this product please contact:
T: 1 (888) 4PTGLAB (1-888-478-4522) (toll free in USA), or 1(312) 455-8498 (outside USA) E: proteintech@ptglab.com W: ptglab.com

This product is exclusively available under Proteintech Group brand and is not available to purchase from any other manufacturer.

Selected Validation Data



Immunofluorescent analysis of (-20°C Ethanol)
fixed HepG2 cells using CoraLite® Plus 488
PLA2G4D antibody (CL488-66752, Clone: 2E2A10)
at dilution of 1:200.