

For Research Use Only

CoraLite® Plus 488-conjugated SLC25A1 Monoclonal antibody

Catalog Number: CL488-66771



Basic Information

Catalog Number:

CL488-66771

Size:

100ul , Concentration: 1000 ug/ml by
Nanodrop;

Source:

Mouse

Isotype:

IgG3

Immunogen Catalog Number:

AG7520

GenBank Accession Number:

BC004980

GeneID (NCBI):

6576

UNIPROT ID:

P53007

Full Name:

solute carrier family 25
(mitochondrial carrier; citrate
transporter), member 1

Calculated MW:

34 kDa

Observed MW:

34 kDa

Purification Method:

Protein A purification

CloneNo.:

1F11A3

Recommended Dilutions:

WB 1:1000-1:4000

Excitation/Emission maxima wavelengths:

493 nm / 522 nm

Applications

Tested Applications:

WB

Species Specificity:

human, mouse, rat

Positive Controls:

WB : Jurkat cells,

Background Information

SLC25A1, also known as CIC or CTP, is a mitochondrial citrate transporter that exports citrate from the mitochondria to the cytosol. SLC25A1 is highly expressed in several tumor types. Recently it has been identified as a novel transcriptional target of mutant p53 and a negative tumor prognostic marker. In addition, defects in SLC25A1 has been found as a cause of combined D-2- and L-2-hydroxyglutaric aciduria. This antibody specifically recognized the endogenous SLC25A1; no protein was detected in cells from subjects containing two alleles with truncating mutations with this antibody. (24681808, 23561848)

Storage

Storage:

Store at -20°C. Avoid exposure to light. Stable for one year after shipment.

Storage Buffer:

PBS with 50% Glycerol, 0.05% Proclin300, 0.5% BSA, pH 7.3.

Aliquoting is unnecessary for -20°C storage

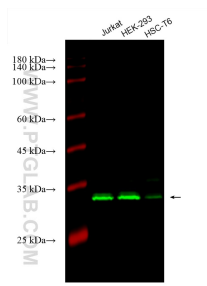
For technical support and original validation data for this product please contact:

T: 1 (888) 4PTGLAB (1-888-478-4522) (toll free
in USA), or 1(312) 455-8498 (outside USA)

E: proteintech@ptglab.com
W: ptglab.com

This product is exclusively available under Proteintech Group brand and is not available to purchase from any other manufacturer.

Selected Validation Data



Various lysates were subjected to SDS PAGE followed by western blot with CL488-66771 (SLC25A1 antibody) at dilution of 1:2000 incubated at room temperature for 1.5 hours.