

For Research Use Only

CoraLite® Plus 488-conjugated SSTR5 Monoclonal antibody

Catalog Number: CL488-66772



Basic Information

Catalog Number: CL488-66772	GenBank Accession Number: BC146576	Purification Method: Protein G purification
Size: 100ul , Concentration: 1000 ug/ml by Nanodrop;	GeneID (NCBI): 6755	CloneNo.: 2B10D8
Source: Mouse	UNIPROT ID: P35346	Recommended Dilutions: IF-P 1:50-1:500
Isotype: IgG1	Full Name: somatostatin receptor 5	Excitation/Emission maxima wavelengths: 493 nm / 522 nm
Immunogen Catalog Number: AG18615	Calculated MW: 364 aa, 39 kDa	
	Observed MW: 41 kDa	

Applications

Tested Applications: IF-P	Positive Controls: IF-P : mouse kidney tissue,
Species Specificity: Human, Mouse, Rat	

Background Information

Somatostatin is a widely distributed peptide with a broad range of biological actions. Two biological forms of somatostatin exist: somatostatin-14 and -28. Somatostatin receptors (SSTR1, 2A and B, 3, 4 and 5) belong to the G protein coupled receptor family and have a wide expression pattern in both normal tissues and solid tumors (PMID: 23872332). SSTR5 has greater affinity for somatostatin-28 than somatostatin-14 (PMID: 8373420).

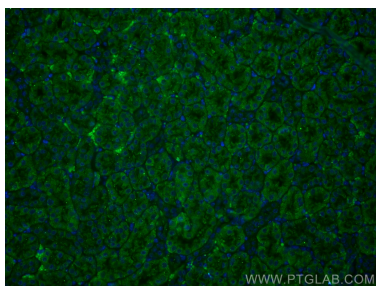
Storage

Storage:
Store at -20°C. Avoid exposure to light. Stable for one year after shipment.
Storage Buffer:
PBS with 50% Glycerol, 0.05% Proclin300, 0.5% BSA, pH 7.3.
Aliquoting is unnecessary for -20°C storage

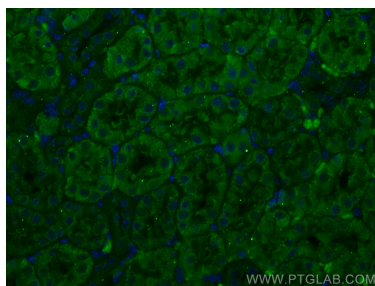
For technical support and original validation data for this product please contact:
T: 1 (888) 4PTGLAB (1-888-478-4522) (toll free in USA), or 1(312) 455-8498 (outside USA)
E: proteintech@ptglab.com
W: ptglab.com

This product is exclusively available under Proteintech Group brand and is not available to purchase from any other manufacturer.

Selected Validation Data



Immunofluorescent analysis of (4% PFA) fixed mouse kidney tissue using Coralite® Plus 488 SSTR5 antibody (CL488-66772, Clone: 2B10D8) at dilution of 1:200.



Immunofluorescent analysis of (4% PFA) fixed mouse kidney tissue using Coralite® Plus 488 SSTR5 antibody (CL488-66772, Clone: 2B10D8) at dilution of 1:200.