

For Research Use Only

CoraLite® Plus 488-conjugated SOX10 Monoclonal antibody

Catalog Number: CL488-66786



Basic Information

Catalog Number: CL488-66786	GenBank Accession Number: BC002824	Purification Method: Protein A purification
Size: 100ul , Concentration: 1000 ug/ml by Nanodrop;	GeneID (NCBI): 6663	CloneNo.: 1D2C8
Source: Mouse	UNIPROT ID: P56693	Recommended Dilutions: IF-P 1:50-1:500
Isotype: IgG2a	Full Name: SRY (sex determining region Y)-box 10	Excitation/Emission maxima wavelengths: 493 nm / 522 nm
Immunogen Catalog Number: AG23191	Calculated MW: 50 kDa	

Applications

Tested Applications: IF-P, FC (Intra)	Positive Controls: IF-P : mouse brain tissue, rat brain tissue
Species Specificity: human, mouse, rat	

Background Information

Sox10 is a transcription factor that has a crucial role in complex signalling pathways regulating central nervous system and neural crest development. The calculated molecular weight of SOX10 is 50 kDa, but modified SOX10 is about 55-60 kDa. (PMID: 23799842)

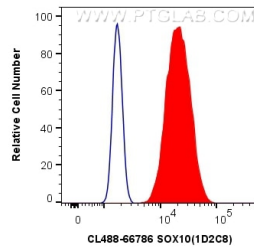
Storage

Storage:
Store at -20°C. Avoid exposure to light. Stable for one year after shipment.
Storage Buffer:
PBS with 50% Glycerol, 0.05% Proclin300, 0.5% BSA, pH 7.3.
Aliquoting is unnecessary for -20°C storage

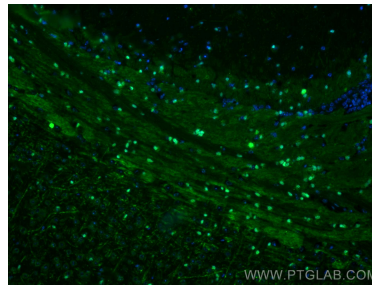
For technical support and original validation data for this product please contact:
T: 1 (888) 4PTGLAB (1-888-478-4522) (toll free in USA), or 1(312) 455-8498 (outside USA)
E: proteintech@ptglab.com
W: ptglab.com

This product is exclusively available under Proteintech Group brand and is not available to purchase from any other manufacturer.

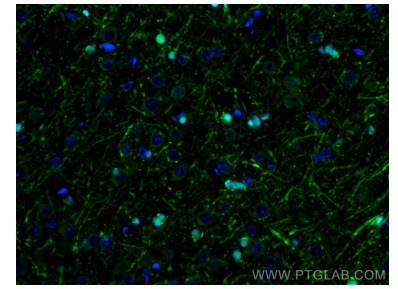
Selected Validation Data



1×10^6 C6 cells were intracellularly stained with 0.4 μ g CoraLite® Plus 488 Anti-Human SOX10 (CL488-66786, Clone:1D2C8) (red), or 0.4 μ g CoraLite® Plus 488 Mouse IgG2a Isotype Control (C1.18.4) (CL488-65208, Clone: C1.18.4) (blue). Cells were fixed and permeabilized with Transcription Factor Staining Buffer Kit (PF00011).



Immunofluorescent analysis of (4% PFA) fixed mouse brain tissue using CoraLite® Plus 488 SOX10 antibody (CL488-66786, Clone: 1D2C8) at dilution of 1:200.



Immunofluorescent analysis of (4% PFA) fixed rat brain tissue using CoraLite® Plus 488 SOX10 antibody (CL488-66786, Clone: 1D2C8) at dilution of 1:200.