

For Research Use Only

CoraLite® Plus 488-conjugated CRACR2A Monoclonal antibody



Catalog Number: CL488-66787

Featured Product

Basic Information

Catalog Number: CL488-66787	GenBank Accession Number: BC004524	Purification Method: Protein G purification
Size: 100ul , Concentration: 1000 µg/ml by Nanodrop;	GeneID (NCBI): 84766	CloneNo.: 4C1F5
Source: Mouse	Full Name: EF-hand calcium binding domain 4B	Recommended Dilutions: IF 1:50-1:500
Isotype: IgG1	Calculated MW: 46 kDa	Excitation/Emission maxima wavelengths: 488 nm / 515 nm
Immunogen Catalog Number: AG7525	Observed MW: 80-90 kDa	

Applications

Tested Applications: IF	Positive Controls: IF : HEK-293 cells,
Species Specificity: Human	

Background Information

CRACR2A (also called CRAC regulator 2A, EFCAB4B) is a cytoplasmic Ca²⁺ sensor predominantly expressed in lymphocytes. It has two isoforms: a long isoform of CRACR2A-a around 80-90 kDa and a short isoform of CRACR2A-c around 46 kDa. CRACR2A-c is involved in the regulation of Ca²⁺-NFAT signaling. CRACR2A-a exists in a GTP- and Golgi membrane-bound form in resting T cells, while it is present in subsynaptic vesicles that translocated from the Golgi region to the immunological synapse after ligation of TCRs. This antibody recognizes both of CRACR2A-c and CRACR2A-a.

Storage

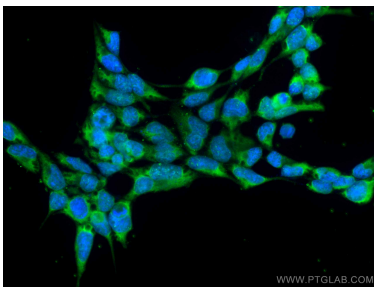
Storage:
Store at -20°C. Avoid exposure to light.
Storage Buffer:
PBS with 50% Glycerol, 0.05% Proclin300, 0.5% BSA, pH 7.3.
Aliquoting is unnecessary for -20°C storage

*** 20ul sizes contain 0.1% BSA

For technical support and original validation data for this product please contact:
T: 1 (888) 4PTGLAB (1-888-478-4522) (toll free in USA), or 1(312) 455-8498 (outside USA)
E: proteintech@ptglab.com
W: ptglab.com

This product is exclusively available under Proteintech Group brand and is not available to purchase from any other manufacturer.

Selected Validation Data



Immunofluorescent analysis of (-20°C Ethanol) fixed HEK-293 cells using CoraLite® Plus 488 CRACR2A antibody (CL488-66787, Clone: 4C1F5) at dilution of 1:100.