

For Research Use Only

CoraLite® Plus 488-conjugated Properdin/PFC Monoclonal antibody

Catalog Number:CL488-66788



Basic Information

Catalog Number: CL488-66788	GenBank Accession Number: BC015756	Purification Method: Protein G purification
Size: 100ul , Concentration: 1000 ug/ml by Nanodrop;	GeneID (NCBI): 5199	CloneNo.: 1D5A9
Source: Mouse	UNIPROT ID: P27918	Recommended Dilutions: WB 1:500-1:1000
Isotype: IgG1	Full Name: complement factor properdin	Excitation/Emission maxima wavelengths: 493 nm / 522 nm
Immunogen Catalog Number: AG9798	Calculated MW: 469 aa, 51 kDa	
	Observed MW: 50 kDa, 100 kDa, 150 kDa	

Applications

Tested Applications: WB	Positive Controls: WB : Jurkat cells,
Species Specificity: human, rat, pig	

Background Information

CFP, also named as Properdin or CFP, is a 469 amino acid protein, which contains 7 TSP type-1 domains. CFP as secreted protein is a positive regulator of the alternate pathway of complement. It binds to and stabilizes the C3- and C5-convertase enzyme complexes. Properdin deficiency poses a significant risk for severe meningococcal infections (PMID: 22229731). Properdin may be novel biomarker for future risk of type 2 diabetes (PMID: 22338105). In plasma, properdin exists as dimers, trimers or tetramers.

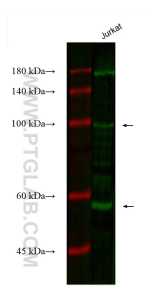
Storage

Storage:
Store at -20°C. Avoid exposure to light. Stable for one year after shipment.
Storage Buffer:
PBS with 50% Glycerol, 0.05% Proclin300, 0.5% BSA, pH 7.3.
Aliquoting is unnecessary for -20°C storage

For technical support and original validation data for this product please contact:
T: 1 (888) 4PTGLAB (1-888-478-4522) (toll free in USA), or 1(312) 455-8498 (outside USA)
E: proteintech@ptglab.com
W: ptglab.com

This product is exclusively available under Proteintech Group brand and is not available to purchase from any other manufacturer.

Selected Validation Data



Various lysates were subjected to SDS PAGE followed by western blot with CL488-66788 (CFP antibody) at dilution of 1:800 incubated at room temperature for 1.5 hours.