

For Research Use Only

CoraLite® Plus 488-conjugated CDR2L Monoclonal antibody

Catalog Number: CL488-66791



Basic Information

Catalog Number: CL488-66791	GenBank Accession Number: BC047534	Purification Method: Protein G purification
Size: 100ul , Concentration: 1000 ug/ml by Nanodrop;	GeneID (NCBI): 30850	CloneNo.: 2E12D10
Source: Mouse	UNIPROT ID: Q86X02	Recommended Dilutions: IF/ICC 1:50-1:500
Isotype: IgG1	Full Name: cerebellar degeneration-related protein 2-like	Excitation/Emission maxima wavelengths: 493 nm / 522 nm
Immunogen Catalog Number: AG6139	Calculated MW: 53 kDa	
	Observed MW: 54 kDa	

Applications

Tested Applications: IF/ICC	Positive Controls: IF/ICC : HEK-293 cells,
Species Specificity: Human, Mouse, Rat	

Background Information

Cerebellar degeneration-related protein 2-like(CDR2L), also named as HUMPPA or Paraneoplastic 62 kDa antigen, is a 465 amino acid protein, which belongs to the CDR2 family. CDR2L contains three potential coiled-coil regions. The functions of protein is so far not known. CDR2L is expressed in the brain and localizes in the cytoplasm.

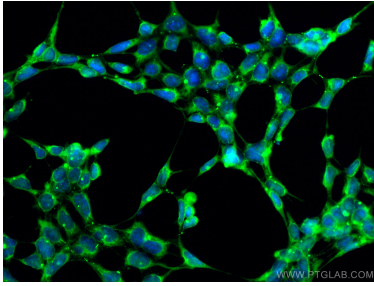
Storage

Storage:
Store at -20°C. Avoid exposure to light. Stable for one year after shipment.
Storage Buffer:
PBS with 50% Glycerol, 0.05% Proclin300, 0.5% BSA, pH 7.3.
Aliquoting is unnecessary for -20°C storage

For technical support and original validation data for this product please contact:
T: 1 (888) 4PTGLAB (1-888-478-4522) (toll free in USA), or 1(312) 455-8498 (outside USA)
E: proteintech@ptglab.com
W: ptglab.com

This product is exclusively available under Proteintech Group brand and is not available to purchase from any other manufacturer.

Selected Validation Data



Immunofluorescent analysis of (-20°C Ethanol) fixed HEK-293 cells using CoraLite®@488 CDR2L antibody (CL488-66791, Clone: 2E12D10) at dilution of 1:200.