

For Research Use Only

# CoraLite® Plus 488-conjugated Cytokeratin 16 Monoclonal antibody

Catalog Number: CL488-66802

Featured Product



## Basic Information

Catalog Number:

CL488-66802

Size:

100ul, Concentration: 1000 ug/ml by Nanodrop;

Source:

Mouse

Isotype:

IgG1

Immunogen Catalog Number:

AG11240

GenBank Accession Number:

BC039169

GeneID (NCBI):

3868

UNIPROT ID:

P08779

Full Name:

keratin 16

Calculated MW:

473 aa, 51 kDa

Observed MW:

51 kDa

Purification Method:

Protein G purification

CloneNo.:

2H4D8

Recommended Dilutions:

WB 1:2000-1:16000

Excitation/Emission maxima wavelengths:

493 nm / 522 nm

## Applications

Tested Applications:

WB

Species Specificity:

human

Positive Controls:

WB : A431 cells,

## Background Information

Keratins are a large family of proteins that form the intermediate filament cytoskeleton of epithelial cells, which are classified into two major sequence types. Type I keratins are a group of acidic intermediate filament proteins, including K9-K23, and the hair keratins Ha1-Ha8. Type II keratins are the basic or neutral counterparts to the acidic type I keratins, including K1-K8, and the hair keratins, Hb1-Hb6. Keratin 16 is a type I cytokeratin. It is paired with keratin 6 in a number of epithelial tissues, including nail bed, esophagus, tongue, and hair follicles.

## Storage

Storage:

Store at -20°C. Avoid exposure to light. Stable for one year after shipment.

Storage Buffer:

PBS with 50% Glycerol, 0.05% Proclin300, 0.5% BSA, pH 7.3.

Aliquoting is unnecessary for -20°C storage

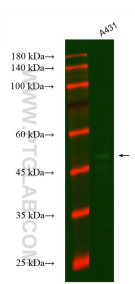
For technical support and original validation data for this product please contact:

T: 1 (888) 4PTGLAB (1-888-478-4522) (toll free in USA), or 1(312) 455-8498 (outside USA)

E: [proteintech@ptglab.com](mailto:proteintech@ptglab.com)  
W: [ptglab.com](http://ptglab.com)

This product is exclusively available under Proteintech Group brand and is not available to purchase from any other manufacturer.

## Selected Validation Data



Various lysates were subjected to SDS PAGE followed by western blot with CL488-66802 (Cytokeratin 16 antibody) at dilution of 1:8000 incubated at room temperature for 1.5 hours.