

For Research Use Only

CoraLite® Plus 488-conjugated EEF1A2 Monoclonal antibody



Catalog Number:CL488-66806

Basic Information

Catalog Number: CL488-66806	GenBank Accession Number: BC000432	Purification Method: Protein G purification
Size: 100ul , Concentration: 1000 µg/ml by Nanodrop;	GeneID (NCBI): 1917	CloneNo.: 4F3F4
Source: Mouse	Full Name: eukaryotic translation elongation factor 1 alpha 2	Recommended Dilutions: IF 1:50-1:500
Isotype: IgG1	Calculated MW: 50 kDa	
Immunogen Catalog Number: AG6875	Observed MW: 48-50 kDa	

Applications

Tested Applications: IF	Positive Controls: IF : U2OS cells,
Species Specificity: Human, mouse, rat, pig	

Background Information

eEF1A2 is one of two isoforms (eEF1A1 and eEF1A2) of eukaryotic elongation factor 1 alpha (eEF1A or eEF1α). The two isoforms share more than 90% sequence identity and have the similar function that being a protein translation factor involved in protein synthesis. Addition, eEF1A2 plays an important role in cell cycle regulation, heat-shock response, aging, posttranslational modifications, and signal transduction (PMID: 25905039). eEF1A2 is expressed in heart, brain tissue, diaphragm and skeletal muscle while eEF1A1 is expressed ubiquitously (PMID:14588074). And the eEF1A2 protein stimulates the phospholipid signaling and activates the Akt-dependent cell migration and actin remodeling that ultimately favors tumorigenesis. It is reported that eEF1A2 was related with kinds of cancers such as ovarian cancer, prostate cancer, pancreatic cancer, breast cancer and lung cancer (PMID:14588074; 24853801; 25744894; 25905039). An 48 kDa band has also been reported(PMID: 24285179).

Storage

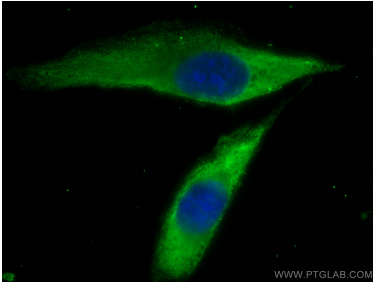
Storage:
Store at -20°C. Avoid exposure to light. Stable for one year after shipment.
Storage Buffer:
PBS with 50% Glycerol, 0.05% Proclin300, 0.5% BSA, pH 7.3.
Aliquoting is unnecessary for -20°C storage

*** 20ul sizes contain 0.1% BSA

For technical support and original validation data for this product please contact:
T: 1 (888) 4PTGLAB (1-888-478-4522) (toll free in USA), or 1(312) 455-8498 (outside USA) E: proteintech@ptglab.com W: ptglab.com

This product is exclusively available under Proteintech Group brand and is not available to purchase from any other manufacturer.

Selected Validation Data



Immunofluorescent analysis of (-20°C Methanol) fixed U2OS cells using Coralite® Plus 488 EEF1A2 antibody (CL488-66806, Clone: 4F3F4) at dilution of 1:200.