

For Research Use Only

CoraLite® Plus 488-conjugated HLA-F Monoclonal antibody



Catalog Number: CL488-66819

Basic Information

Catalog Number: CL488-66819	GenBank Accession Number: BC062991	Purification Method: Protein G purification
Size: 100ul , Concentration: 1000 µg/ml by Nanodrop;	GeneID (NCBI): 3134	CloneNo.: 1B12C2
Source: Mouse	Full Name: major histocompatibility complex, class I, F	Excitation/Emission maximum wavelengths: 493 nm / 522 nm
Isotype: IgG1	Calculated MW: 39 kDa	
Immunogen Catalog Number: AG6475	Observed MW: 40-45 kDa	

Applications

Tested Applications:
FC (Intra)

Species Specificity:
Human

Background Information

Human major histocompatibility complex (MHC) antigens, also referred to as human leukocyte antigens (HLA), are encoded by genes located on the short arm of chromosome 6 (6p21.3). There are two classes of HLA antigens: class I and class II. This class I molecules are membrane glycoproteins composed of a heavy (alpha) chain which is encoded by a HLA class I gene, and β 2-microglobulin light (beta) chain. The most extensively characterized members of the HLA class I gene family are the genes encoding the major transplantation antigens, HLA-A, B and C. HLA-F is a non-classical MHC class I molecule. (PMID: 667938; 3375250; 2249951)

Storage

Storage:
Store at -20°C. Avoid exposure to light. Stable for one year after shipment.

Storage Buffer:
PBS with 50% Glycerol, 0.05% Proclin300, 0.5% BSA, pH 7.3.

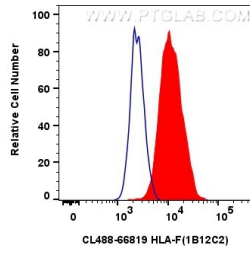
Aliquoting is unnecessary for -20°C storage

*** 20ul sizes contain 0.1% BSA

For technical support and original validation data for this product please contact:
T: 1 (888) 4PTGLAB (1-888-478-4522) (toll free in USA), or 1(312) 455-8498 (outside USA) E: proteintech@ptglab.com
W: ptglab.com

This product is exclusively available under Proteintech Group brand and is not available to purchase from any other manufacturer.

Selected Validation Data



1x10⁶ Raji cells were intracellularly stained with 0.4 ug CoraLite® Plus 488 Anti-Human HLA-F (CL488-66819, Clone: 1B12C2) (red), or 0.4 ug CoraLite® Plus 488 Mouse IgG1 Isotype Control (1F8D3) (CL488-66360-1, Clone: 1F8D3) (blue). Cells were fixed with 4% PFA and permeabilized with Flow Cytometry Perm Buffer (PF00011-C).