

For Research Use Only

# CoraLite® Plus 488-conjugated COL6A1 Monoclonal antibody

Catalog Number: CL488-66824



## Basic Information

Catalog Number:

CL488-66824

Size:

100ul , Concentration: 1000 ug/ml by Nanodrop;

Source:

Mouse

Isotype:

IgG2a

Immunogen Catalog Number:

AG11809

GenBank Accession Number:

BC052575

GeneID (NCBI):

1291

UNIPROT ID:

P12109

Full Name:

collagen, type VI, alpha 1

Calculated MW:

1028 aa, 109 kDa

Observed MW:

140-150 kDa

Purification Method:

Protein A purification

CloneNo.:

3H10B1

Recommended Dilutions:

IF-P 1:50-1:500

Excitation/Emission maxima wavelengths:

493 nm / 522 nm

## Applications

Tested Applications:

IF-P

Species Specificity:

human

Positive Controls:

IF-P : human liver cancer tissue, human colon cancer tissue

## Background Information

Type VI Collagen is a major structural component of microfibrils. Type VI Collagen was found to be present throughout the connective tissue and in the extracellular matrix of cultured fibroblasts (PMID: 6723253). It is a heterotrimer composed of three different chains: alpha-1(VI), alpha-2(VI), and alpha-3(VI) or alpha-5(VI) or alpha-6(VI). The alpha-1(VI) chain is encoded by COL6A1 gene. Mutations in this gene result in Bethlem myopathy and Ullrich congenital muscular dystrophy.

## Storage

Storage:

Store at -20°C. Avoid exposure to light. Stable for one year after shipment.

Storage Buffer:

PBS with 50% glycerol, 0.05% Proclin300, 0.5% BSA

Aliquoting is unnecessary for -20°C storage

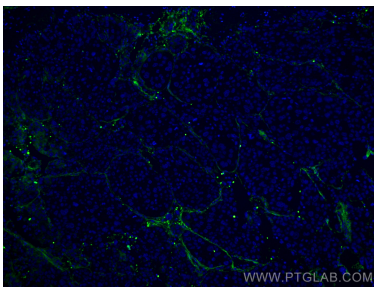
For technical support and original validation data for this product please contact:

T: 1 (888) 4PTGLAB (1-888-478-4522) (toll free in USA), or 1(312) 455-8498 (outside USA)

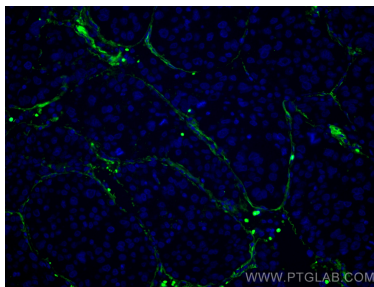
E: [proteintech@ptglab.com](mailto:proteintech@ptglab.com)  
W: [ptglab.com](http://ptglab.com)

This product is exclusively available under Proteintech Group brand and is not available to purchase from any other manufacturer.

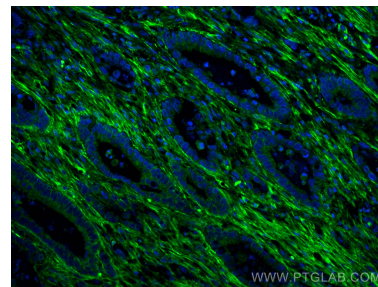
## Selected Validation Data



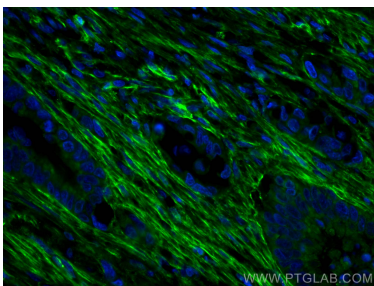
Immunofluorescent analysis of (4% PFA) fixed human liver cancer tissue using CoraLite® Plus 488 Collagen Type VI antibody (CL488-66824, Clone: 3H10B1 ) at dilution of 1:200.



Immunofluorescent analysis of (4% PFA) fixed human liver cancer tissue using CoraLite® Plus 488 Collagen Type VI antibody (CL488-66824, Clone: 3H10B1 ) at dilution of 1:200.



Immunofluorescent analysis of (4% PFA) fixed human colon cancer tissue using CoraLite® Plus 488 Collagen Type VI antibody (CL488-66824, Clone: 3H10B1 ) at dilution of 1:200.



Immunofluorescent analysis of (4% PFA) fixed human colon cancer tissue using CoraLite® Plus 488 Collagen Type VI antibody (CL488-66824, Clone: 3H10B1 ) at dilution of 1:200.