

For Research Use Only

CoraLite® Plus 488-conjugated IL-12RB1 Monoclonal antibody

Catalog Number: CL488-66829

Featured Product



Basic Information

Catalog Number:

CL488-66829

Size:

100ul, Concentration: 1000 ug/ml by Nanodrop;

Source:

Mouse

Isotype:

IgG1

Immunogen Catalog Number:

AG6920

GenBank Accession Number:

BC029121

GeneID (NCBI):

3594

UNIPROT ID:

P42701

Full Name:

interleukin 12 receptor, beta 1

Calculated MW:

662 aa, 73 kDa

Observed MW:

100-110 kDa

Purification Method:

Protein G purification

CloneNo.:

1E10E10

Excitation/Emission maxima wavelengths:

493 nm / 522 nm

Applications

Tested Applications:

FC (Intra)

Species Specificity:

human

Background Information

IL12RB1, also named as Interleukin-12 receptor subunit beta-1 or CD212, is a 662 amino acid protein, which contains 5 fibronectin type-III domains and belongs to the type I cytokine receptor family. Type 2 subfamily. IL12RB1 localizes in the membrane and functions as an interleukin receptor which binds interleukin-12 with low affinity and is involved in IL12 transduction. Associated with IL12RB2 it forms a functional, high affinity receptor for IL12. Associates also with IL23R to form the interleukin-23 receptor which functions in IL23 signal transduction probably through activation of the Jak-Stat signaling cascade.

Storage

Storage:

Store at -20°C. Avoid exposure to light. Stable for one year after shipment.

Storage Buffer:

PBS with 50% Glycerol, 0.05% Proclin300, 0.5% BSA, pH 7.3.

Aliquoting is unnecessary for -20°C storage

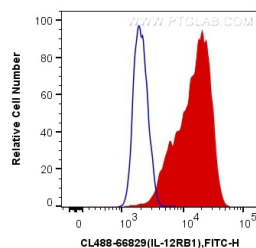
For technical support and original validation data for this product please contact:

T: 1 (888) 4PTGLAB (1-888-478-4522) (toll free in USA), or 1(312) 455-8498 (outside USA)

E: proteintech@ptglab.com
W: ptglab.com

This product is exclusively available under Proteintech Group brand and is not available to purchase from any other manufacturer.

Selected Validation Data



1X10⁶ K-562 cells were intracellularly stained with 0.4 µg CoraLite® Plus 488 Anti-Human IL-12RB1 (CL488-66829, Clone:1E10E10) (red), or 0.4 µg Control Antibody. Cells were fixed with 4% PFA and permeabilized with Flow Cytometry Perm Buffer (PF00011-C).