

For Research Use Only

CoraLite® Plus 488-conjugated MBNL1 Monoclonal antibody

Catalog Number: CL488-66837



Basic Information

Catalog Number: CL488-66837	GenBank Accession Number: BC050535	Purification Method: Protein G purification
Size: 100ul , Concentration: 1000 ug/ml by Nanodrop;	GeneID (NCBI): 4154	CloneNo.: 1H2C12
Source: Mouse	UNIPROT ID: Q9NR56	Recommended Dilutions: IF/ICC 1:250-1:1000
Isotype: IgG1	Full Name: muscleblind-like (Drosophila)	Excitation/Emission maxima wavelengths: 493 nm / 522 nm
Immunogen Catalog Number: AG7752	Calculated MW: 42 kDa	
	Observed MW: 40 kDa	

Applications

Tested Applications: IF/ICC	Positive Controls: IF/ICC : A431 cells,
Species Specificity: Human, mouse, rat, pig	

Background Information

MBNL1 (muscleblind-like 1) is one of the MBNL proteins containing 3 members (MBNL1-3) in vertebrates. And MBNL1 is widely expressed in adult tissues including brain, heart and skeletal muscle (PMID:25274774). As a highly conserved RNA-binding protein, MBNL1 regulates alternative splicing, alternative polyadenylation, mRNA stability and mRNA localization in the nucleus. The neurological diseases DM1 and DM2 (myotonic dystrophy type 1 and type2) are caused by expansion of repetitive sequences in non-coding regions in the DMPK gene because of the inappropriate patterns of alternative splicing owing to MBNL1(PMID:24354850). The antibody could recognize the common full-length protein in applications.

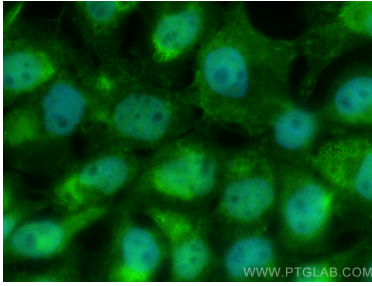
Storage

Storage:
Store at -20°C. Avoid exposure to light. Stable for one year after shipment.
Storage Buffer:
PBS with 50% Glycerol, 0.05% Proclin300, 0.5% BSA, pH 7.3.
Aliquoting is unnecessary for -20°C storage

For technical support and original validation data for this product please contact:
T: 1 (888) 4PTGLAB (1-888-478-4522) (toll free in USA), or 1(312) 455-8498 (outside USA)
E: proteintech@ptglab.com
W: ptglab.com

This product is exclusively available under Proteintech Group brand and is not available to purchase from any other manufacturer.

Selected Validation Data



Immunofluorescent analysis of (4% PFA) fixed A431 cells using CoraLite® Plus 488 MBNL1 antibody (CL488-66837, Clone: 1H2C12) at dilution of 1:500.