

For Research Use Only

CoraLite® Plus 488-conjugated TFPI Monoclonal antibody

Catalog Number: CL488-66842



Basic Information

Catalog Number: CL488-66842	GenBank Accession Number: BC015514	Purification Method: Protein A purification
Size: 100ul , Concentration: 1000 ug/ml by Nanodrop;	GeneID (NCBI): 7035	CloneNo.: 1B12F11
Source: Mouse	UNIPROT ID: P10646	Recommended Dilutions: IF/ICC 1:50-1:500
Isotype: IgG2a	Full Name: tissue factor pathway inhibitor (lipoprotein-associated coagulation inhibitor)	Excitation/Emission maxima wavelengths: 493 nm / 522 nm
Immunogen Catalog Number: AG14980	Calculated MW: 251aa,29 kDa; 304aa,35 kDa	
	Observed MW: 35-38 kDa	

Applications

Tested Applications: IF/ICC, FC (Intra)	Positive Controls: IF/ICC : HepG2 cells,
Species Specificity: human	

Background Information

Tissue factor pathway inhibitor (TFPI) is a critical anticoagulant protein present in endothelium and platelets. TFPI is produced as two major isoforms in humans, TFPIa and TFPIb that result from alternative splicing. The TFPIb isoform localizes to the endothelium surface where it is a potent inhibitor of tissue factor-factor VIIa complexes that initiate blood coagulation. The TFPIa isoform is present in platelets. TFPI is a Kunitz-type serine protease inhibitor that exerts anticoagulant activity by blocking early procoagulant stimuli. TFPI can enhance anti-thrombotic treatment in sepsis, inflammatory diseases, and cardiovascular diseases.

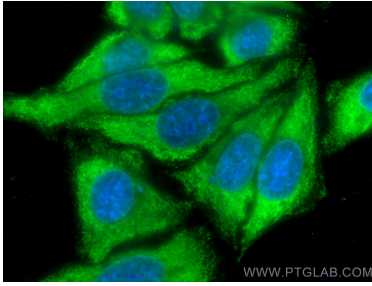
Storage

Storage:
Store at -20°C. Avoid exposure to light. Stable for one year after shipment.
Storage Buffer:
PBS with 50% Glycerol, 0.05% Proclin300, 0.5% BSA, pH 7.3.
Aliquoting is unnecessary for -20°C storage

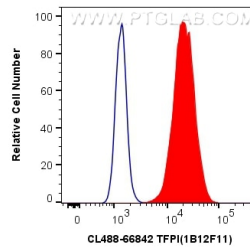
For technical support and original validation data for this product please contact:
T: 1 (888) 4PTGLAB (1-888-478-4522) (toll free in USA), or 1(312) 455-8498 (outside USA)
E: proteintech@ptglab.com
W: ptglab.com

This product is exclusively available under Proteintech Group brand and is not available to purchase from any other manufacturer.

Selected Validation Data



Immunofluorescent analysis of (-20°C Ethanol) fixed HepG2 cells using CoraLite® Plus 488 TFPI antibody (CL488-66842, Clone: 1B12F11) at dilution of 1:200.



1X10⁶ HepG2 cells were intracellularly stained with 0.4 ug CoraLite® Plus 488 Anti-Human TFPI (CL488-66842, Clone:1B12F11) (red), or 0.4 ug Control Antibody. Cells were fixed with 4% PFA and permeabilized with Flow Cytometry Perm Buffer (PF00011-C).