

For Research Use Only

CoraLite® Plus 488-conjugated CAMK2 Monoclonal antibody



Catalog Number: **CL488-66843**

Basic Information

Catalog Number: CL488-66843	GenBank Accession Number: BC040457	Purification Method: Protein G purification
Size: 100ul , Concentration: 1000 µg/ml by Nanodrop;	GeneID (NCBI): 815	CloneNo.: 1E3B3
Source: Mouse	Full Name: calcium/calmodulin-dependent protein kinase II alpha	Recommended Dilutions: WB 1:1000-1:8000
Isotype: IgG1	Calculated MW: 478 aa, 54 kDa	Excitation/Emission maxima wavelengths: 493 nm / 522 nm
Immunogen Catalog Number: AG4736	Observed MW: 45-60 kDa	

Applications

Tested Applications: WB	Positive Controls: WB : rat brain tissue, mouse brain tissue
Species Specificity: Human, Mouse, Rat, Pig	

Background Information

CaM-kinase II (CAMK2) is a prominent kinase in the central nervous system that may function in long-term potentiation and neurotransmitter release. It is a member of the NMDAR signaling complex in excitatory synapses it may regulate NMDAR-dependent potentiation of the AMPAR and synaptic plasticity. This antibody can recognize all the members of CAMK2 family.

Storage

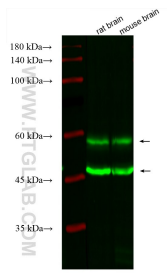
Storage:
Store at -20°C. Avoid exposure to light. Stable for one year after shipment.
Storage Buffer:
PBS with 50% Glycerol, 0.05% Proclin300, 0.5% BSA, pH 7.3.
Aliquoting is unnecessary for -20°C storage

***** 20ul sizes contain 0.1% BSA**

For technical support and original validation data for this product please contact:
T: 1 (888) 4PTGLAB (1-888-478-4522) (toll free in USA), or 1(312) 455-8498 (outside USA)
E: proteintech@ptglab.com
W: ptglab.com

This product is exclusively available under Proteintech Group brand and is not available to purchase from any other manufacturer.

Selected Validation Data



Various lysates were subjected to SDS PAGE followed by western blot with CL488-66843 (CAMK2 antibody) at dilution of 1:4000 incubated at room temperature for 1.5 hours.