

For Research Use Only

CoraLite® Plus 488-conjugated SMO Monoclonal antibody



Catalog Number: CL488-66851-2

Basic Information

Catalog Number: CL488-66851-2	GenBank Accession Number: BC009989	Purification Method: Protein G purification
Size: 100ul , Concentration: 1000 µg/ml by Nanodrop;	GeneID (NCBI): 6608	CloneNo.: 2A11A10
Source: Mouse	Full Name: smoothened homolog (Drosophila)	Recommended Dilutions: IF 1:50-1:500
Isotype: IgG1	Calculated MW: 787 aa, 86 kDa	Excitation/Emission maxima wavelengths: 493 nm / 522 nm
Immunogen Catalog Number: AG25861		

Applications

Tested Applications: IF	Positive Controls: IF : hTERT-RPE1 cells,
Species Specificity: Human	

Background Information

Smoothened (SMO) is a G protein-coupled receptor that is a component of the hedgehog (Hh) signaling pathway and is conserved from flies to humans. The Hh pathway plays central roles in animal development and stem-cell function. Defects in Hh signalling lead to birth defects and cancer in humans. Expressed on the primary cilium, SMO interacts with the patched protein, a receptor for Hh proteins.

Storage

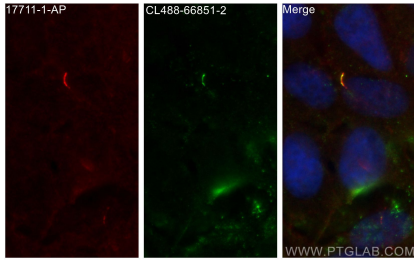
Storage:
Store at -20°C. Avoid exposure to light. Stable for one year after shipment.
Storage Buffer:
PBS with 50% Glycerol, 0.05% Proclin300, 0.5% BSA, pH 7.3.
Aliquoting is unnecessary for -20°C storage

***** 20ul sizes contain 0.1% BSA**

For technical support and original validation data for this product please contact:
T: 1 (888) 4PTGLAB (1-888-478-4522) (toll free in USA), or 1(312) 455-8498 (outside USA)
E: proteintech@ptglab.com
W: ptglab.com

This product is exclusively available under Proteintech Group brand and is not available to purchase from any other manufacturer.

Selected Validation Data



Immunofluorescent analysis of (4% PFA) fixed hTERT-RPE1 cells using CoraLite® Plus 488 SMO antibody (CL488-66851, Clone: 2B10A11) at dilution of 1:200, ARL13B antibody (17711-1-AP, red).