

For Research Use Only

# CoraLite® Plus 488-conjugated SMO Monoclonal antibody



Catalog Number: **CL488-66851**

## Basic Information

<b>Catalog Number:</b> CL488-66851	<b>GenBank Accession Number:</b> BC009989	<b>Purification Method:</b> Protein A purification
<b>Size:</b> 100ul , Concentration: 2000 µg/ml by Nanodrop;	<b>GeneID (NCBI):</b> 6608	<b>CloneNo.:</b> 2B10A11
<b>Source:</b> Mouse	<b>UNIPROT ID:</b> Q99835	<b>Recommended Dilutions:</b> IF/ICC 1:50-1:500
<b>Isotype:</b> IgG2b	<b>Full Name:</b> smoothened homolog (Drosophila)	<b>Excitation/Emission maxima wavelengths:</b> 493 nm / 522 nm
<b>Immunogen Catalog Number:</b> AG25861	<b>Calculated MW:</b> 787 aa, 86 kDa	

## Applications

<b>Tested Applications:</b> IF	<b>Positive Controls:</b> IF/ICC : MDCK cells,
<b>Species Specificity:</b> Human, Canine	

## Background Information

Smoothened (SMO) is a G protein-coupled receptor that is a component of the hedgehog (Hh) signaling pathway and is conserved from flies to humans. The Hh pathway plays central roles in animal development and stem-cell function. Defects in Hh signalling lead to birth defects and cancer in humans. Expressed on the primary cilium, SMO interacts with the patched protein, a receptor for Hh proteins.

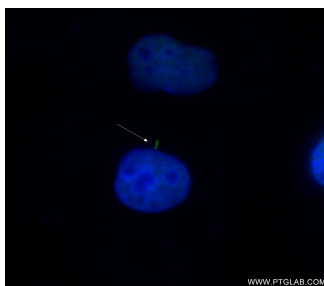
## Storage

**Storage:**  
Store at -20°C. Avoid exposure to light. Stable for one year after shipment.  
**Storage Buffer:**  
PBS with 50% Glycerol, 0.05% Proclin300, 0.5% BSA, pH 7.3.  
**Aliquoting is unnecessary for -20°C storage**

For technical support and original validation data for this product please contact:  
T: 1 (888) 4PTGLAB (1-888-478-4522) (toll free in USA), or 1(312) 455-8498 (outside USA)  
E: [proteintech@ptglab.com](mailto:proteintech@ptglab.com)  
W: [ptglab.com](http://ptglab.com)

This product is exclusively available under Proteintech Group brand and is not available to purchase from any other manufacturer.

## Selected Validation Data



Immunofluorescent analysis of (-20°C Ethanol) fixed MDCK cells using CL488-66851 (SMO antibody) at dilution of 1:100.