

For Research Use Only

# CoraLite® Plus 488-conjugated Phospho-RIPK1 (Ser161) Monoclonal antibody



Catalog Number: CL488-66854

## Basic Information

<b>Catalog Number:</b> CL488-66854	<b>GenBank Accession Number:</b> NM_003804	<b>Purification Method:</b> Protein G purification
<b>Size:</b> 100ul , Concentration: 1000 µg/ml by Nanodrop;	<b>GeneID (NCBI):</b> 8737	<b>CloneNo.:</b> 1B2G1
<b>Source:</b> Mouse	<b>Full Name:</b> receptor (TNFRSF)-interacting serine- threonine kinase 1	<b>Recommended Dilutions:</b> IF 1:50-1:500
<b>Isotype:</b> IgG1	<b>Calculated MW:</b> 76 kDa	<b>Excitation/Emission maxima wavelengths:</b> 488 nm / 515 nm
	<b>Observed MW:</b> 74 kDa, 45 kDa	

## Applications

### Tested Applications:

FC (Intra), IF

### Species Specificity:

Human

### Positive Controls:

IF : U2OS cells,

## Background Information

RIPK1(Receptor-interacting serine/threonine-protein kinase 1) is primarily involved in mediating TNF-R1-induced cell activation, apoptosis and necroptosis and belongs to a novel class of kinases that function in cell survival and cell death mechanisms(PMID:22685397 ).It has 2 isoforms produced by alternative splicing.It also can exist as the protein with lower molecular weight about 25kd and 45kd in HAEC and HUVEC(PMID:22685397).

## Storage

### Storage:

Store at -20°C. Avoid exposure to light. Stable for one year after shipment.

### Storage Buffer:

PBS with 50% Glycerol, 0.05% Proclin300, 0.5% BSA, pH 7.3.

Aliquoting is unnecessary for -20°C storage

\*\*\* 20ul sizes contain 0.1% BSA

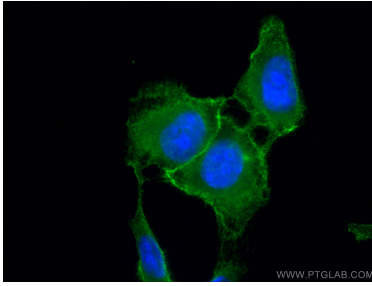
For technical support and original validation data for this product please contact:

T: 1 (888) 4PTGLAB (1-888-478-4522) (toll free  
in USA), or 1(312) 455-8498 (outside USA)

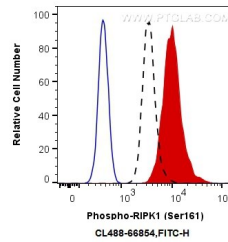
E: proteintech@ptglab.com  
W: ptglab.com

This product is exclusively available under Proteintech Group brand and is not available to purchase from any other manufacturer.

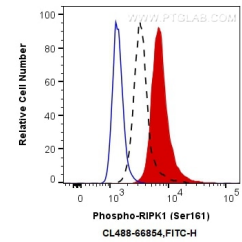
## Selected Validation Data



Immunofluorescent analysis of (-20°C Ethanol) fixed U2OS cells using CoraLite® Plus 488 Phospho-RIPK1 (Ser161) antibody (CL488-66854, Clone: 1B2G1) at dilution of 1:100.



1X10<sup>6</sup> HEK-293T cells untreated (dashed lines) or treated with Calyculin A (red) were intracellularly stained with 0.13 ug CoraLite® Plus 488 Anti-Human Phospho-RIPK1 (Ser161) (CL488-66854, Clone:1B2G1) (red), or 0.13 ug Control Antibody (blue). Cells were fixed with 4% PFA and permeabilized with 90% MeOH.



1X10<sup>6</sup> PC-3 cells untreated (dashed lines) or treated with Calyculin A (red) were intracellularly stained with 0.13 ug CoraLite488 Anti-Human Phospho-RIPK1 (Ser161) (CL488-66854, Clone:1B2G1) (red), or 0.13 ug Control Antibody (blue). Cells were fixed and permeabilized with True-Nuclear Transcription Factor Buffer Set.