

For Research Use Only

CoraLite® Plus 488-conjugated Annexin A10 Monoclonal antibody



Catalog Number: CL488-66869

Basic Information

Catalog Number: CL488-66869	GenBank Accession Number: BC007320	Purification Method: Protein A purification
Size: 100ul , Concentration: 1000 µg/ml by Nanodrop;	GeneID (NCBI): 11199	CloneNo.: 1A7A11
Source: Mouse	Full Name: annexin A10	Recommended Dilutions: IF 1:50-1:500
Isotype: IgG2a	Calculated MW: 37 kDa	Excitation/Emission maxima wavelengths: 488 nm / 515 nm
Immunogen Catalog Number: AG27098	Observed MW: 37 kDa	

Applications

Tested Applications: IF	Positive Controls: IF : human colon cancer tissue,
Species Specificity: Human, pig, mouse	

Background Information

ANXA10, member of the Annexin family, is a calcium-and-phospholipid-binding protein. It is implicated in multiple physiological processes, including growth regulation, cell division, apoptosis, and differentiation. ANXA10 was recently observed to be upregulated in Barrett's esophagus, oral cancers, pancreatic cancer and colon cancer.

Storage

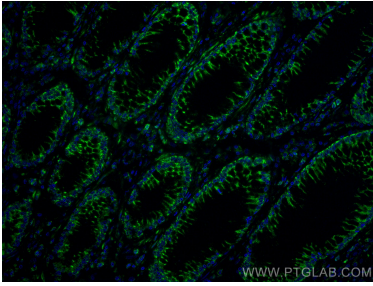
Storage:
Store at -20°C. Avoid exposure to light.
Storage Buffer:
PBS with 50% Glycerol, 0.05% Proclin300, 0.5% BSA, pH 7.3.
Aliquoting is unnecessary for -20°C storage

*** 20ul sizes contain 0.1% BSA

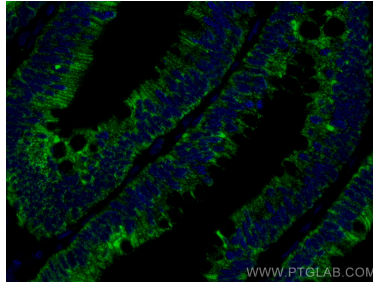
For technical support and original validation data for this product please contact:
T: 1 (888) 4PTGLAB (1-888-478-4522) (toll free in USA), or 1(312) 455-8498 (outside USA) E: proteintech@ptglab.com W: ptglab.com

This product is exclusively available under Proteintech Group brand and is not available to purchase from any other manufacturer.

Selected Validation Data



Immunofluorescent analysis of (4% PFA) fixed human colon cancer tissue using CoraLite® Plus 488 Annexin A10 antibody (CL488-66869, Clone: 1A7A11) at dilution of 1:200.



Immunofluorescent analysis of (4% PFA) fixed human colon cancer tissue using CoraLite® Plus 488 Annexin A10 antibody (CL488-66869, Clone: 1A7A11) at dilution of 1:200.