

For Research Use Only

CoraLite® Plus 488-conjugated SREBF1 Monoclonal antibody

Catalog Number: CL488-66875

Featured Product



Basic Information

Catalog Number:

CL488-66875

Size:

100ul, Concentration: 1000 ug/ml by Nanodrop;

Source:

Mouse

Isotype:

IgG1

Immunogen Catalog Number:

AG5484

GenBank Accession Number:

BC063281

GeneID (NCBI):

6720

UNIPROT ID:

P36956

Full Name:

sterol regulatory element binding transcription factor 1

Calculated MW:

1177 aa, 125 kDa

Observed MW:

125 kDa

Purification Method:

Protein G purification

CloneNo.:

1B6G5

Recommended Dilutions:

IF/ICC 1:50-1:500

Excitation/Emission maxima wavelengths:

493 nm / 522 nm

Applications

Tested Applications:

IF/ICC

Species Specificity:

human

Positive Controls:

IF/ICC : HepG2 cells,

Background Information

SREBF1, also named as BHLHD1 and SREBP1, contains one basic helix-loop-helix (bHLH) domain and belongs to the SREBP family. It is a transcriptional activator required for lipid homeostasis. The SREBPs are synthesized as precursors anchored to endoplasmic reticulum (ER) membranes and complexed with SCAP. When the cellular cholesterol level is low, SREBP-SCAP complexes move to the Golgi apparatus, where SREBPs undergo a two-step proteolytic processing, leading to the release of the mature form, an N-terminal fragment, i.e., basic helix-loop-helix leucine zipper transcription factor. These factors enter the nucleus where they bind to sterol regulatory elements (SRE) in the promoter regions of a number of genes whose products mediate the synthesis of cholesterol and fatty acids. [PMID: 21698267]. This antibody can recognize the 125kd precursor form and the 68kd mature form of human SREBF1.

Storage

Storage:

Store at -20°C. Avoid exposure to light. Stable for one year after shipment.

Storage Buffer:

PBS with 50% Glycerol, 0.05% Proclin300, 0.5% BSA, pH 7.3.

Aliquoting is unnecessary for -20°C storage

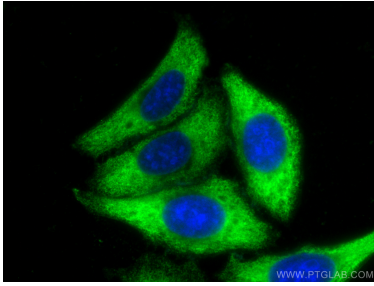
For technical support and original validation data for this product please contact:

T: 1 (888) 4PTGLAB (1-888-478-4522) (toll free in USA), or 1(312) 455-8498 (outside USA)

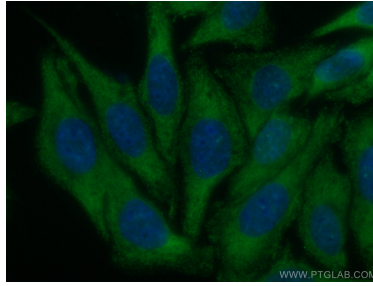
E: proteintech@ptglab.com
W: ptglab.com

This product is exclusively available under Proteintech Group brand and is not available to purchase from any other manufacturer.

Selected Validation Data



Immunofluorescent analysis of (-20°C Ethanol) fixed HepG2 cells using CoraLite® Plus 488 SREBF1 antibody (CL488-66875, Clone: 1B6G5) at dilution of 1:200.



Immunofluorescent analysis of (-20°C Ethanol) fixed HepG2 cells using CoraLite® Plus 488-conjugated SREBF1 antibody (CL488-66875, Clone: 1B6G5) at dilution of 1:100.