

For Research Use Only

CoraLite® Plus 488-conjugated DLC1 Monoclonal antibody

Catalog Number:CL488-66894



Basic Information

Catalog Number:

CL488-66894

Size:

100ul , Concentration: 1000 ug/ml by Nanodrop;

Source:

Mouse

Isotype:

IgG1

Immunogen Catalog Number:

AG24404

GenBank Accession Number:

BC054511

GeneID (NCBI):

10395

UNIPROT ID:

Q96QB1

Full Name:

deleted in liver cancer 1

Calculated MW:

171 kDa

Observed MW:

115 kDa

Purification Method:

Protein G purification

CloneNo.:

1G10H12

Recommended Dilutions:

IF/ICC 1:50-1:500

Excitation/Emission maxima wavelengths:

493 nm / 522 nm

Applications

Tested Applications:

IF/ICC

Species Specificity:

Human

Positive Controls:

IF/ICC : A375 cells,

Background Information

Deleted in Liver Cancer 1 (DLC1) is a RhoGAP-containing tumor suppressor that inhibits angiogenesis by repressing VEGF production in epithelial cells. DLC1 is often down-regulated in a variety of cancers, such as those of the liver, lung, breast, stomach, brain, colon and prostate due to either genomic deletion or aberrant DNA methylation.

Storage

Storage:

Store at -20°C. Avoid exposure to light. Stable for one year after shipment.

Storage Buffer:

PBS with 50% Glycerol, 0.05% Proclin300, 0.5% BSA, pH 7.3.

Aliquoting is unnecessary for -20°C storage

For technical support and original validation data for this product please contact:

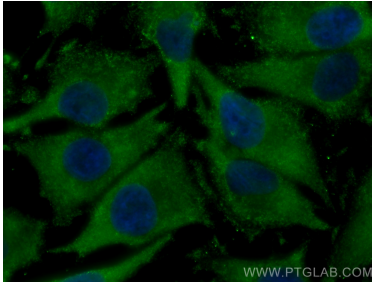
T: 1 (888) 4PTGLAB (1-888-478-4522) (toll free in USA), or 1(312) 455-8498 (outside USA)

E: proteintech@ptglab.com

W: ptglab.com

This product is exclusively available under Proteintech Group brand and is not available to purchase from any other manufacturer.

Selected Validation Data



Immunofluorescent analysis of (-20°C Methanol) fixed A375 cells using CoraLite® Plus 488 DLC1 antibody (CL488-66894, Clone: 1G10H12) at dilution of 1:200.