

For Research Use Only

CoraLite® Plus 488-conjugated Alpha Actinin Monoclonal antibody

Catalog Number: CL488-66895



Basic Information

Catalog Number:

CL488-66895

Size:

100ul , Concentration: 1000 ug/ml by Nanodrop;

Source:

Mouse

Isotype:

IgG2b

Immunogen Catalog Number:

AG28383

GenBank Accession Number:

BC015766

GeneID (NCBI):

87

UNIPROT ID:

P12814

Full Name:

actinin, alpha 1

Calculated MW:

103 kDa

Observed MW:

100-105 kDa

Purification Method:

Protein A purification

CloneNo.:

1E2E1

Recommended Dilutions:

WB 1:1000-1:8000

Excitation/Emission maxima wavelengths:

493 nm / 522 nm

Applications

Tested Applications:

WB

Species Specificity:

Human, rat, mouse

Positive Controls:

WB : HepG2 cells, HeLa cells, RAW 264.7 cells

Background Information

Alpha Actinins are highly conserved actin-binding proteins that form antiparallel homodimers with the actin-binding domains on each end of the molecule, allowing crosslinking of actin molecules. There are four alpha actinin isoforms identified: two ubiquitously expressed cytoskeletal isoforms (ACTN1 and ACTN4) and two striated muscle-specific sarcomeric isoforms (ACTN2 and ACTN3). ACTN1 is also alternatively spliced to form smooth muscle or brain specific isoforms. This antibody recognize endogenous ACTN1, while it may cross-react with ACTN2 and ACTN4.

Storage

Storage:

Store at -20°C. Avoid exposure to light. Stable for one year after shipment.

Storage Buffer:

PBS with 50% Glycerol, 0.05% Proclin300, 0.5% BSA, pH 7.3.

Aliquoting is unnecessary for -20°C storage

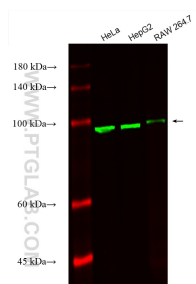
For technical support and original validation data for this product please contact:

T: 1 (888) 4PTGLAB (1-888-478-4522) (toll free in USA), or 1(312) 455-8498 (outside USA)

E: proteintech@ptglab.com
W: ptglab.com

This product is exclusively available under Proteintech Group brand and is not available to purchase from any other manufacturer.

Selected Validation Data



Various lysates were subjected to SDS PAGE followed by western blot with CL488-66895 (Alpha Actinin antibody) at dilution of 1:4000 incubated at room temperature for 1.5 hours.