

For Research Use Only

CoraLite® Plus 488-conjugated AIM2 Monoclonal antibody



Catalog Number: CL488-66902

Basic Information

Catalog Number: CL488-66902	GenBank Accession Number: BC010940	Purification Method: Protein G purification
Size: 100ul , Concentration: 1000 µg/ml by Nanodrop;	GeneID (NCBI): 9447	CloneNo.: 3E12A8
Source: Mouse	Full Name: absent in melanoma 2	Recommended Dilutions: WB 1:500-1:1000
Isotype: IgG1	Calculated MW: 343 aa, 39 kDa	Excitation/Emission maxima wavelengths: 493 nm / 522 nm
Immunogen Catalog Number: AG14607	Observed MW: 37-39 and 53 kDa	

Applications

Tested Applications: WB	Positive Controls: WB : RAW 264.7 cells,
Species Specificity: Human, mouse, rat, rabbit	

Background Information

Absent in melanoma 2 (AIM2) is a sensor of cytosolic DNA that is responsible for activation of the inflammasome and host immune responses to DNA viruses and intracellular bacteria [PMID: 22695634]. Upon binding to DNA, it is thought to undergo oligomerization and to associate with PYCARD initiating the recruitment of caspase-1 precursor and processing of interleukin-1 beta and interleukin-18. Otherwise, it functions as a tumor suppressor which may act by repressing NF-kappa-B transcriptional activity [PMID:16432157,20566831]. 66902-1-Ig antibody detects the 37-39 and 53 kDa protein in SDS-PAGE similar to the paper published. [PMID: 28809949]

Storage

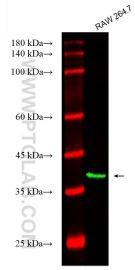
Storage:
Store at -20°C. Avoid exposure to light. Stable for one year after shipment.
Storage Buffer:
PBS with 50% Glycerol, 0.05% Proclin300, 0.5% BSA, pH 7.3.
Aliquoting is unnecessary for -20°C storage

*** 20ul sizes contain 0.1% BSA

For technical support and original validation data for this product please contact:
T: 1 (888) 4PTGLAB (1-888-478-4522) (toll free in USA), or 1(312) 455-8498 (outside USA)
E: proteintech@ptglab.com
W: ptglab.com

This product is exclusively available under Proteintech Group brand and is not available to purchase from any other manufacturer.

Selected Validation Data



Various lysates were subjected to SDS PAGE followed by western blot with CL488-66902 (AIM2 antibody) at dilution of 1:500 incubated at room temperature for 1.5 hours.