

For Research Use Only

# CoraLite® Plus 488-conjugated Integrin Alpha 6 Monoclonal antibody



Catalog Number: CL488-66906

## Basic Information

<b>Catalog Number:</b> CL488-66906	<b>GenBank Accession Number:</b> BC136456	<b>Purification Method:</b> Protein A purification
<b>Size:</b> 100ul , Concentration: 1000 µg/ml by Nanodrop;	<b>GeneID (NCBI):</b> 3655	<b>CloneNo.:</b> 2B12A1
<b>Source:</b> Mouse	<b>Full Name:</b> integrin, alpha 6	<b>Excitation/Emission maxima wavelengths:</b> 493 nm / 522 nm
<b>Isotype:</b> IgG2b	<b>Calculated MW:</b> 1073 aa, 119 kDa	
<b>Immunogen Catalog Number:</b> AG25866	<b>Observed MW:</b> 115-120 kDa	

## Applications

**Tested Applications:**  
FC (Intra)  
**Species Specificity:**  
Human

## Background Information

### Storage

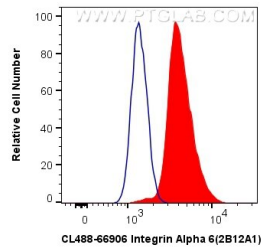
**Storage:**  
Store at -20°C. Avoid exposure to light. Stable for one year after shipment.  
**Storage Buffer:**  
PBS with 50% Glycerol, 0.05% Proclin300, 0.5% BSA, pH 7.3.  
Aliquoting is unnecessary for -20°C storage

\*\*\* 20ul sizes contain 0.1% BSA

For technical support and original validation data for this product please contact:  
T: 1 (888) 4PTGLAB (1-888-478-4522) (toll free in USA), or 1(312) 455-8498 (outside USA)      E: [proteintech@ptglab.com](mailto:proteintech@ptglab.com)  
W: [ptglab.com](http://ptglab.com)

This product is exclusively available under Proteintech Group brand and is not available to purchase from any other manufacturer.

## Selected Validation Data



1X10<sup>6</sup> A431 cells were intracellularly stained with 0.4 ug CoraLite® Plus 488 Anti-Human Integrin Alpha 6 (CL488-66906, Clone:2B12A1) (red), or 0.4 ug Mouse IgG2b Isotype Control (CL488-66360-3, Clone: K11B8C4B5) (blue). Cells were fixed with 4% PFA and permeabilized with Flow Cytometry Perm Buffer (PF00011-C).