

For Research Use Only

# CoraLite® Plus 488-conjugated NFATC2 Monoclonal antibody



Catalog Number:CL488-66917

## Basic Information

<b>Catalog Number:</b> CL488-66917	<b>GenBank Accession Number:</b> BC136418	<b>Purification Method:</b> Protein G purification
<b>Size:</b> 100ul , Concentration: 1000 µg/ml by Nanodrop;	<b>GeneID (NCBI):</b> 4773	<b>CloneNo.:</b> 1F3B2
<b>Source:</b> Mouse	<b>Full Name:</b> nuclear factor of activated T-cells, cytoplasmic, calcineurin-dependent 2	<b>Recommended Dilutions:</b> IF 1:50-1:500
<b>Isotype:</b> IgG1	<b>Calculated MW:</b> 925 aa, 100 kDa	<b>Excitation/Emission maxima wavelengths:</b> 493 nm / 522 nm
<b>Immunogen Catalog Number:</b> AG17990	<b>Observed MW:</b> 135-140 kDa	

## Applications

<b>Tested Applications:</b> IF	<b>Positive Controls:</b> IF : HepG2 cells,
<b>Species Specificity:</b> Human, mouse	

## Background Information

Nuclear factor of activated T-cells, cytoplasmic 2 (NFATC2), also named NFAT1, or NFATP, is a 925 amino acid protein, which is expressed in thymus, spleen, heart, testis, brain, placenta, muscle and pancreas. Cytoplasmic for the phosphorylated form and nuclear after activation that is controlled by calcineurin-mediated dephosphorylation. Rapid nuclear exit of NFATC is thought to be one mechanism by which cells distinguish between sustained and transient calcium signals. The subcellular localization of NFATC plays a key role in the regulation of gene transcription. NFATC2 plays a role in the inducible expression of cytokine genes in T-cells, especially in the induction of the IL-2, IL-3, IL-4, TNF-alpha or GM-CSF. NFATC2 promotes invasive migration through the activation of GPC6 expression and WNT5A signaling pathway. The calculated molecular weight of NFATC2 is about 97-100 kDa, but the modified NFATC2 protein is about 135 kDa.

## Storage

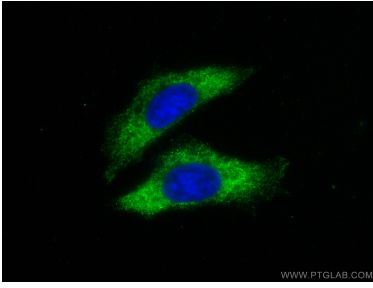
**Storage:**  
Store at -20°C. Avoid exposure to light. Stable for one year after shipment.  
**Storage Buffer:**  
PBS with 50% Glycerol, 0.05% Proclin300, 0.5% BSA, pH 7.3.  
Aliquoting is unnecessary for -20°C storage

\*\*\* 20ul sizes contain 0.1% BSA

For technical support and original validation data for this product please contact:  
T: 1 (888) 4PTGLAB (1-888-478-4522) (toll free in USA), or 1(312) 455-8498 (outside USA) E: proteintech@ptglab.com W: ptglab.com

This product is exclusively available under Proteintech Group brand and is not available to purchase from any other manufacturer.

## Selected Validation Data



Immunofluorescent analysis of (-20°C Ethanol) fixed HepG2 cells using CoraLite® Plus 488 NFATC2 antibody (CL488-66917, Clone: 1F3B2 ) at dilution of 1:200.