

For Research Use Only

CoraLite® Plus 488-conjugated RDM1 Monoclonal antibody

Catalog Number: CL488-66941



Basic Information

Catalog Number: CL488-66941	GenBank Accession Number: BC038301	Purification Method: Protein A purification
Size: 100ul , Concentration: 1000 ug/ml by Nanodrop;	GeneID (NCBI): 201299	CloneNo.: 1C10B4
Source: Mouse	UNIPROT ID: Q8NG50	Recommended Dilutions: IF/ICC 1:50-1:500
Isotype: IgG2a	Full Name: RAD52 motif 1	Excitation/Emission maxima wavelengths: 493 nm / 522 nm
Immunogen Catalog Number: AG28686	Calculated MW: 284 aa, 32 kDa	
	Observed MW: 32 kDa	

Applications

Tested Applications: IF/ICC	Positive Controls: IF/ICC : A549 cells,
Species Specificity: Human	

Background Information

RDM1, also named as RAD52B, encodes a RNA recognition motif (RRM)-containing protein conferred resistance to the antitumor agent cisplatin. The expression of RDM1 is closely related to the cell proliferation and apoptosis of thyroid carcinoma cells and RDM1 may be a potential marker of lung adenocarcinoma. RDM1 has many isoforms (8 kDa, 12-19 kDa and 25-32 kDa) with long or short N-terminus and a great diversity in the exonic composition of C-terminus generated by alternative pre-mRNA splicing and differential usage of two translational start sites. RDM1 protein can be expressed differently in cytoplasm or nuclear/nucleolar in the absence of stress, proteotoxic stress and mild heat shock, suggesting functional differences among the RDM1 proteins. (PMID: 28939762, 17905820, 28939762, 30069034)

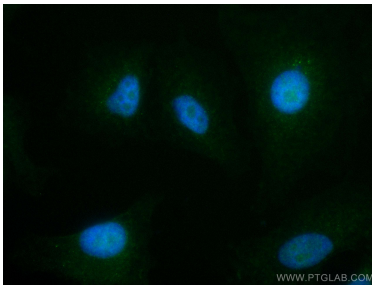
Storage

Storage:
Store at -20°C. Avoid exposure to light. Stable for one year after shipment.
Storage Buffer:
PBS with 50% Glycerol, 0.05% Proclin300, 0.5% BSA, pH 7.3.
Aliquoting is unnecessary for -20°C storage

For technical support and original validation data for this product please contact:
T: 1 (888) 4PTGLAB (1-888-478-4522) (toll free in USA), or 1(312) 455-8498 (outside USA)
E: proteintech@ptglab.com
W: ptglab.com

This product is exclusively available under Proteintech Group brand and is not available to purchase from any other manufacturer.

Selected Validation Data



Immunofluorescent analysis of (4% PFA) fixed A549 cells using CoraLite® Plus 488 RDM1 antibody (CL488-66941, Clone: 1C10B4) at dilution of 1:200.