

For Research Use Only

CoraLite® Plus 488-conjugated TBL1X Monoclonal antibody

Catalog Number:CL488-66955



Basic Information

Catalog Number:

CL488-66955

Size:

100ul , Concentration: 1000 ug/ml by

Nanodrop;

Source:

Mouse

Isotype:

IgG2a

Immunogen Catalog Number:

AG5291

GenBank Accession Number:

BC032708

GeneID (NCBI):

6907

UNIPROT ID:

O60907

Full Name:

transducin (beta)-like 1X-Linked

Calculated MW:

526 aa, 57 kDa

Observed MW:

57 kDa, 62 kDa

Purification Method:

Protein A purification

CloneNo.:

1A9A1

Recommended Dilutions:

IF/ICC 1:50-1:500

Excitation/Emission maxima

wavelengths:

493 nm / 522 nm

Applications

Tested Applications:

IF/ICC

Species Specificity:

Human

Positive Controls:

IF/ICC : HeLa cells,

Storage

Storage:

Store at -20°C. Avoid exposure to light. Stable for one year after shipment.

Storage Buffer:

PBS with 50% Glycerol, 0.05% Proclin300, 0.5% BSA, pH 7.3.

Aliquoting is unnecessary for -20°C storage

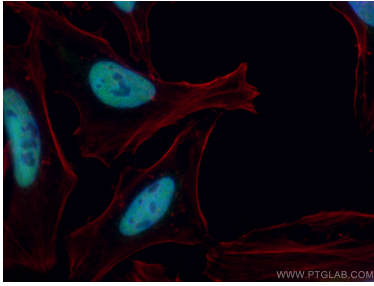
For technical support and original validation data for this product please contact:

T: 1 (888) 4PTGLAB (1-888-478-4522) (toll free
in USA), or 1(312) 455-8498 (outside USA)

E: proteintech@ptglab.com
W: ptglab.com

This product is exclusively available under Proteintech Group brand and is not available to purchase from any other manufacturer.

Selected Validation Data



Immunofluorescent analysis of (4% PFA) fixed HeLa cells using CoraLite® Plus 488 TBL1X antibody (CL488-66955, Clone: 1A9A1) at dilution of 1:200, CL594-Phalloidin (red).