

For Research Use Only

CoraLite®488-conjugated CTBP1 Monoclonal antibody



Catalog Number:CL488-66995

Basic Information

Catalog Number: CL488-66995	GenBank Accession Number: BC011655	Purification Method: Protein G purification
Size: 100ul , Concentration: 2000 µg/ml by Bradford method using BSA as the standard;	GeneID (NCBI): 1487	CloneNo.: 1C4B2
Source: Mouse	Full Name: C-terminal binding protein 1	Recommended Dilutions: IF 1:50-1:500
Isotype: IgG1	Calculated MW: 48 kDa	Excitation/Emission maxima wavelengths: 488 nm/515 nm
Immunogen Catalog Number: AG28567		

Applications

Tested Applications: FC, IF	Positive Controls: IF : HepG2 cells,
Species Specificity: Human, rat, mouse	

Background Information

CTBP1, also named as C-terminal-binding protein 1, is a 440 amino acid protein, which belongs to the D-isomer specific 2-hydroxyacid dehydrogenase family. CTBP1 is a cellular phosphoprotein that associates with various proteins and functions as a corepressor of transcription. CTBP1 and the related protein CTBP2 are characterized as C-terminal binding protein of adenovirus E1A, and they preferentially associate with the E1A via a 5-amino acid motif, PLDLS, to repress E1A induced oncogenesis and cellular transformation. CTBP1 is expressed from embryo to adult, but CTBP2 is mainly expressed during embryogenesis.

Storage

Storage:
Store at -20°C. Avoid exposure to light. Stable for one year after shipment.
Storage Buffer:
PBS with 50% Glycerol, 0.05% Proclin300, 0.5% BSA, pH 7.3.
Aliquoting is unnecessary for -20°C storage

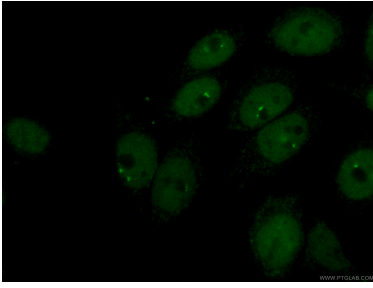
For technical support and original validation data for this product please contact:

T: 1 (888) 4PTGLAB (1-888-478-4522) (toll free
in USA), or 1(312) 455-8498 (outside USA)

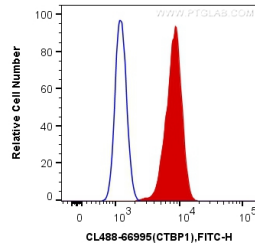
E: proteintech@ptglab.com
W: ptglab.com

This product is exclusively available under Proteintech Group brand and is not available to purchase from any other manufacturer.

Selected Validation Data



Immunofluorescent analysis of (4% PFA) fixed HepG2 cells using CL488-66995 (CTBP1 antibody) at dilution of 1:100.



1×10^6 HepG2 cells were intracellularly stained with 0.2 μ g CoraLite[®]488 Anti-Human CTBP1 (CL488-66995, Clone:1C4B2) (red), or 0.2 μ g Mouse IgG1 Isotype Control (CL488-66360, Clone: T1F8D3F10) (blue). Cells were fixed and permeabilized with Transcription Factor Staining Buffers.