

For Research Use Only

CoraLite® Plus 488-conjugated PTPRO Monoclonal antibody



Catalog Number: CL488-67000

Basic Information

Catalog Number: CL488-67000	GenBank Accession Number: BC035960	Purification Method: Protein A purification
Size: 100ul , Concentration: 1000 µg/ml by Nanodrop;	GeneID (NCBI): 5800	CloneNo.: 2F2B4
Source: Mouse	Full Name: protein tyrosine phosphatase, receptor type, O	Recommended Dilutions: IF 1:50-1:500
Isotype: IgG2b	Calculated MW: 138 kDa	Excitation/Emission maxima wavelengths: 488 nm / 515 nm
Immunogen Catalog Number: AG8284	Observed MW: 160 kDa, 180-220 kDa	

Applications

Tested Applications: IF	Positive Controls: IF : human kidney tissue,
Species Specificity: Human, Pig	

Background Information

PTPRO(receptor-type tyrosine-protein phosphatase O) is also named as GLEPP1, PTPU2 and belongs to the protein-tyrosine phosphatase family. The protein is a receptor-like membrane protein tyrosine phosphatase expressed at the apical membrane of the podocyte foot processes in the kidney(PMID:21722858). The 1,159-amino acid predicted mature protein contains a large extracellular domain, a single transmembrane domain, and a single intracellular PTPase domain. Defects in PTPRO are the cause of nephrotic syndrome type 6 (NPHS6). In reducing conditions, PTPRO can form a smear from 180 to 220 kDa; In non-reducing conditions, a band appears around 350 kDa, which likely represents the dimeric form of full-length PTPRO (PMID: 19573017).

Storage

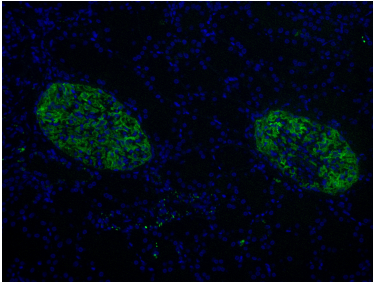
Storage:
Store at -20°C. Avoid exposure to light.
Storage Buffer:
PBS with 50% Glycerol, 0.05% Proclin300, 0.5% BSA, pH 7.3.
Aliquoting is unnecessary for -20°C storage

*** 20ul sizes contain 0.1% BSA

For technical support and original validation data for this product please contact:
T: 1 (888) 4PTGLAB (1-888-478-4522) (toll free in USA), or 1(312) 455-8498 (outside USA)
E: proteintech@ptglab.com
W: ptglab.com

This product is exclusively available under Proteintech Group brand and is not available to purchase from any other manufacturer.

Selected Validation Data



Immunofluorescent analysis of (4% PFA) fixed human kidney tissue using CoraLite® Plus 488 PTPRO antibody (CL488-67000, Clone: 2F2B4) at dilution of 1:200.