

For Research Use Only

# CoraLite® Plus 488-conjugated KIF5A Monoclonal antibody



Catalog Number: CL488-67009

## Basic Information

<b>Catalog Number:</b> CL488-67009	<b>GenBank Accession Number:</b> BC146670	<b>Purification Method:</b> Protein G purification
<b>Size:</b> 100ul , Concentration: 1000 µg/ml by Nanodrop;	<b>GeneID (NCBI):</b> 3798	<b>CloneNo.:</b> 1A7E3
<b>Source:</b> Mouse	<b>Full Name:</b> kinesin family member 5A	<b>Recommended Dilutions:</b> IF 1:50-1:500
<b>Isotype:</b> IgG1	<b>Calculated MW:</b> 1032 aa, 117 kDa	<b>Excitation/Emission maxima wavelengths:</b> 493 nm / 522 nm
<b>Immunogen Catalog Number:</b> AG15682	<b>Observed MW:</b> 130 kDa	

## Applications

<b>Tested Applications:</b> IF	<b>Positive Controls:</b> IF : PC-12 cells,
<b>Species Specificity:</b> Human, mouse, rat, pig	

## Background Information

Kinesin superfamily proteins (KIFs) are microtubule-based molecular motors essential for the intracellular transport of various cargos, including organelles, proteins, and RNAs. KIF 5A is expressed exclusively in neurons and transports neuronal cargoes into axons and dendrites. KIF5A mutations have been associated with Charcot-Marie-Tooth Type 2, an axonal peripheral neuropathy characterized by progressive loss of peripheral sensation and muscle wasting.

## Storage

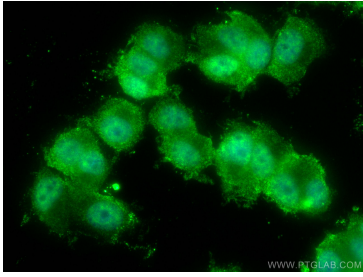
**Storage:**  
Store at -20°C. Avoid exposure to light. Stable for one year after shipment.  
**Storage Buffer:**  
PBS with 50% Glycerol, 0.05% Proclin300, 0.5% BSA, pH 7.3.  
Aliquoting is unnecessary for -20°C storage

\*\*\* 20ul sizes contain 0.1% BSA

For technical support and original validation data for this product please contact:  
T: 1 (888) 4PTGLAB (1-888-478-4522) (toll free in USA), or 1(312) 455-8498 (outside USA)      E: proteintech@ptglab.com  
W: ptglab.com

This product is exclusively available under Proteintech Group brand and is not available to purchase from any other manufacturer.

## Selected Validation Data



Immunofluorescent analysis of (4% PFA) fixed PC-12 cells using CoraLite® Plus 488 KIF5A antibody (CL488-67009, Clone: 1A7E3 ) at dilution of 1:200.