

For Research Use Only

CoraLite® Plus 488-conjugated NFS1 Monoclonal antibody

Catalog Number: CL488-67021

Featured Product



Basic Information

Catalog Number:

CL488-67021

Size:

100ul , Concentration: 1000 ug/ml by Nanodrop;

Source:

Mouse

Isotype:

IgG1

Immunogen Catalog Number:

AG8017

GenBank Accession Number:

BC018471

GeneID (NCBI):

9054

UNIPROT ID:

Q9Y697

Full Name:

NFS1 nitrogen fixation 1 homolog (S. cerevisiae)

Calculated MW:

50 kDa

Purification Method:

Protein G purification

CloneNo.:

3A10A7

Recommended Dilutions:

IF/ICC 1:50-1:500

Excitation/Emission maxima

wavelengths:

493 nm / 522 nm

Applications

Tested Applications:

IF/ICC, FC (Intra)

Species Specificity:

human, mouse, rat

Positive Controls:

IF/ICC : HeLa cells,

Background Information

NFS1(nitrogen fixation 1 homolog) is also named as NIFS, HUSSY-08 and belongs to the class-V pyridoxal-phosphate-dependent aminotransferase family. The protein has been identified as a pyridoxal phosphate-containing homodimer that catalyzes the formation of equimolar amounts of elemental sulfur and L-alanine from the substrate, L-cysteine. It is reported that NFS1 is also able to catalyze the removal of selenium from selenocysteine, a mechanism similar to the L-cysteine reaction was postulated(PMID:9812986). It has 2 isoforms produced by alternative initiation.

Storage

Storage:

Store at -20°C. Avoid exposure to light. Stable for one year after shipment.

Storage Buffer:

PBS with 50% Glycerol, 0.05% Proclin300, 0.5% BSA, pH 7.3.

Aliquoting is unnecessary for -20°C storage

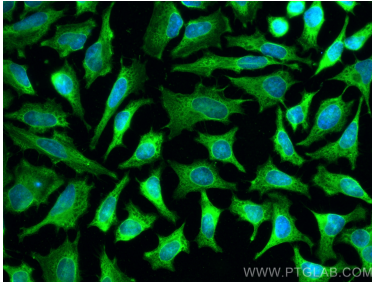
For technical support and original validation data for this product please contact:

T: 1 (888) 4PTGLAB (1-888-478-4522) (toll free in USA), or 1(312) 455-8498 (outside USA)

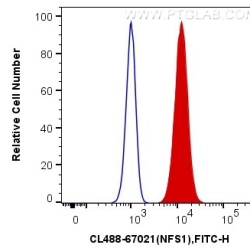
E: proteintech@ptglab.com
W: ptglab.com

This product is exclusively available under Proteintech Group brand and is not available to purchase from any other manufacturer.

Selected Validation Data



Immunofluorescent analysis of (-20°C Methanol) fixed HeLa cells using CoraLite® Plus 488 NHS1 antibody (CL488-67021, Clone: 3A10A7) at dilution of 1:200.



1X10⁶ HepG2 cells were intracellularly stained with 0.4 ug CoraLite® Plus 488 Anti-Human NFS1 (CL488-67021, Clone:3A10A7) (red), or 0.4 ug x. Cells were fixed with 4% PFA and permeabilized with Flow Cytometry Perm Buffer (PF00011-C).