

CoraLite® Plus 488-conjugated NEU1 Monoclonal antibody

Catalog Number: **CL488-67032**

Basic Information

Catalog Number: CL488-67032	GenBank Accession Number: BC011900	Purification Method: Protein G purification
Size: 100ul , Concentration: 1000 µg/ml by Nanodrop;	GeneID (NCBI): 4758	CloneNo.: 1F6D1
Source: Mouse	UNIPROT ID: Q99519	Recommended Dilutions: IF/ICC 1:50-1:500
Isotype: IgG1	Full Name: sialidase 1 (lysosomal sialidase)	Excitation/Emission maxima wavelengths: 493 nm / 522 nm
Immunogen Catalog Number: AG27945	Calculated MW: 45 kDa	
	Observed MW: 45-48 kDa	

Applications

Tested Applications: IF	Positive Controls: IF/ICC : U-251 cells,
Species Specificity: Human, Rat, Pig	

Background Information

NEU1 (lysosomal sialidase) encodes a kind of lysosomal enzyme that could cleave terminal silic acids from glycoproteins or glycolipids to regulate various biological processes by conformational change (PMID:28130415). In the lysosome, NEU1 is one member of a heterotrimeric complex, the others are beta-galactosidase and cathepsin A. The NEU1 is widely expressed in mammalian tissues and involved in lysosomal storage disorder sialidosis, autoimmune diseases and the malignancy and metastasis of cancer cells (PMID:19075514). NUE1 also expresses on the plasma membrane where it modulates several signalling molecules about inflammation, exocytosis, phagocytosis, cell adhesion and proliferation (PMID:21928149). Addition, it is reported that mutation in NEU1 of human could lead to sialidosis (PMID:14517945).

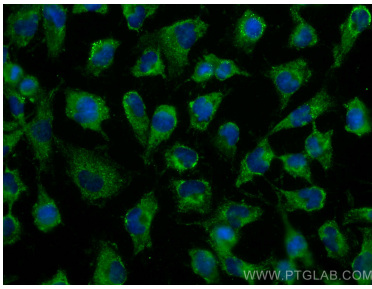
Storage

Storage:
Store at -20°C. Avoid exposure to light. Stable for one year after shipment.
Storage Buffer:
PBS with 50% Glycerol, 0.05% Proclin300, 0.5% BSA, pH 7.3.
Aliquoting is unnecessary for -20°C storage

For technical support and original validation data for this product please contact:
T: 1 (888) 4PTGLAB (1-888-478-4522) (toll free in USA), or 1(312) 455-8498 (outside USA)
E: proteintech@ptglab.com
W: ptglab.com

This product is exclusively available under Proteintech Group brand and is not available to purchase from any other manufacturer.

Selected Validation Data



Immunofluorescent analysis of (-20°C Ethanol) fixed U-251 cells using CoraLite® Plus 488 NEU1 antibody (CL488-67032, Clone: 1F6D1) at dilution of 1:200.