

For Research Use Only

CoraLite® Plus 488-conjugated MED30 Monoclonal antibody

Catalog Number: CL488-67038



Basic Information

Catalog Number:

CL488-67038

Size:

100ul , Concentration: 1000 ug/ml by
Nanodrop;

Source:

Mouse

Isotype:

IgG2a

Immunogen Catalog Number:

AG10235

GenBank Accession Number:

BC008226

GeneID (NCBI):

90390

UNIPROT ID:

Q96HR3

Full Name:

mediator complex subunit 30

Calculated MW:

178 aa, 20 kDa

Observed MW:

20-25 kDa

Purification Method:

Protein A purification

CloneNo.:

1D7C4

Excitation/Emission maxima
wavelengths:

493 nm / 522 nm

Applications

Tested Applications:

FC (Intra)

Species Specificity:

Human, rat, pig

Background Information

MED30, also named as THRAP6 and TRAP25, is a component of the Mediator complex. MED30 has two isoforms with MW 16-20 kDa and 20-25 kDa.

Storage

Storage:

Store at -20°C. Avoid exposure to light. Stable for one year after shipment.

Storage Buffer:

PBS with 50% Glycerol, 0.05% Proclin300, 0.5% BSA, pH 7.3.

Aliquoting is unnecessary for -20°C storage

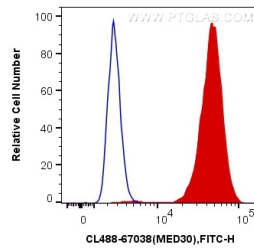
For technical support and original validation data for this product please contact:

T: 1 (888) 4PTGLAB (1-888-478-4522) (toll free
in USA), or 1(312) 455-8498 (outside USA)

E: proteintech@ptglab.com
W: ptglab.com

This product is exclusively available under Proteintech Group brand and is not available to purchase from any other manufacturer.

Selected Validation Data



1X10⁶ HeLa cells were intracellularly stained with 0.4 ug CoraLite® Plus 488 Anti-Human MED30 (CL488-67038, Clone:1D7C4) (red), or 0.4 ug Mouse IgG2a Isotype Control (CL488-66360-2, Clone: K11A1B2A2) (blue). Cells were fixed and permeabilized with Transcription Factor Staining Buffer Kit (PF00011).