

For Research Use Only

# CoraLite® Plus 488-conjugated GUK1 Monoclonal antibody

Catalog Number: CL488-67047

Featured Product



## Basic Information

Catalog Number:

CL488-67047

Size:

100ul , Concentration: 1000 ug/ml by Nanodrop;

Source:

Mouse

Isotype:

IgG1

Immunogen Catalog Number:

AG28805

GenBank Accession Number:

BC009914

GeneID (NCBI):

2987

UNIPROT ID:

Q16774

Full Name:

guanylate kinase 1

Calculated MW:

22 kDa

Observed MW:

22-27 kDa

Purification Method:

Protein G purification

CloneNo.:

2H5E1

Recommended Dilutions:

IF-P 1:50-1:500

Excitation/Emission maxima wavelengths:

493 nm / 522 nm

## Applications

Tested Applications:

IF-P

Species Specificity:

Human, Mouse, Rat

Positive Controls:

IF-P : human thyroid cancer tissue,

## Storage

Storage:

Store at -20°C. Avoid exposure to light. Stable for one year after shipment.

Storage Buffer:

PBS with 50% Glycerol, 0.05% Proclin300, 0.5% BSA, pH 7.3.

Aliquoting is unnecessary for -20°C storage

For technical support and original validation data for this product please contact:

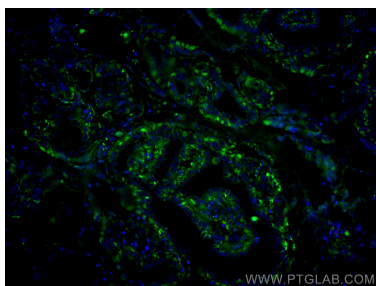
T: 1 (888) 4PTGLAB (1-888-478-4522) (toll free in USA), or 1(312) 455-8498 (outside USA)

E: [proteintech@ptglab.com](mailto:proteintech@ptglab.com)

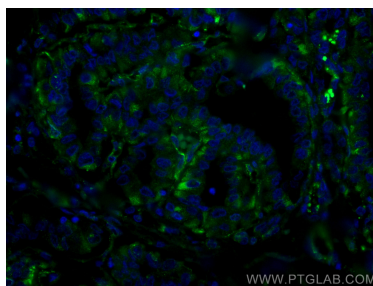
W: [ptglab.com](http://ptglab.com)

This product is exclusively available under Proteintech Group brand and is not available to purchase from any other manufacturer.

## Selected Validation Data



Immunofluorescent analysis of (4% PFA) fixed human thyroid cancer tissue using CoraLite® Plus 488 GUK1 antibody (CL488-67047, Clone: 2H5E1 ) at dilution of 1:200.



Immunofluorescent analysis of (4% PFA) fixed human thyroid cancer tissue using CoraLite® Plus 488 GUK1 antibody (CL488-67047, Clone: 2H5E1 ) at dilution of 1:200.