

For Research Use Only

# CoraLite® Plus 488-conjugated Cyclin H Monoclonal antibody



Catalog Number:CL488-67065

## Basic Information

<b>Catalog Number:</b> CL488-67065	<b>GenBank Accession Number:</b> BC005280	<b>Purification Method:</b> Protein A purification
<b>Size:</b> 100ul , Concentration: 1000 µg/ml by Nanodrop;	<b>GeneID (NCBI):</b> 902	<b>CloneNo.:</b> 2C5G11
<b>Source:</b> Mouse	<b>Full Name:</b> cyclin H	<b>Recommended Dilutions:</b> IF 1:50-1:500
<b>Isotype:</b> IgG2a	<b>Calculated MW:</b> 38 kDa	<b>Excitation/Emission maxima wavelengths:</b> 493 nm / 522 nm
<b>Immunogen Catalog Number:</b> AG28556	<b>Observed MW:</b> 38 kDa	

## Applications

<b>Tested Applications:</b> IF	<b>Positive Controls:</b> IF : PC-3 cells,
<b>Species Specificity:</b> Human, mouse, rat	

## Background Information

### Storage

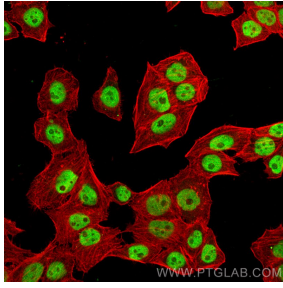
**Storage:**  
Store at -20°C. Avoid exposure to light.  
**Storage Buffer:**  
PBS with 50% Glycerol, 0.05% Proclin300, 0.5% BSA, pH 7.3.  
Aliquoting is unnecessary for -20°C storage

\*\*\* 20ul sizes contain 0.1% BSA

For technical support and original validation data for this product please contact:  
T: 1 (888) 4PTGLAB (1-888-478-4522) (toll free in USA), or 1(312) 455-8498 (outside USA)      E: proteintech@ptglab.com  
W: ptglab.com

This product is exclusively available under Proteintech Group brand and is not available to purchase from any other manufacturer.

## Selected Validation Data



Immunofluorescent analysis of (4% PFA) fixed PC-3 cells using CoraLite® Plus 488 Cyclin H antibody (CL488-67065, Clone: 2C5G11) at dilution of 1:200, CL594-Phalloidin (red).