

For Research Use Only

# CoraLite® Plus 488-conjugated ASK1 Monoclonal antibody



Catalog Number: **CL488-67072**

## Basic Information

<b>Catalog Number:</b> CL488-67072	<b>GenBank Accession Number:</b> BC054503	<b>Purification Method:</b> Protein G purification
<b>Size:</b> 100ul , Concentration: 1000 µg/ml by Nanodrop;	<b>GeneID (NCBI):</b> 4217	<b>CloneNo.:</b> 1C3A10
<b>Source:</b> Mouse	<b>Full Name:</b> mitogen-activated protein kinase kinase kinase 5	<b>Recommended Dilutions:</b> IF 1:50-1:500
<b>Isotype:</b> IgG1	<b>Calculated MW:</b> 155 kDa	<b>Excitation/Emission maxima wavelengths:</b> 493 nm / 522 nm
<b>Immunogen Catalog Number:</b> AG5818	<b>Observed MW:</b> 110 kDa	

## Applications

<b>Tested Applications:</b> FC (Intra), IF	<b>Positive Controls:</b> IF : A431 cells,
<b>Species Specificity:</b> Human, Mouse, Rat	

## Background Information

ASK1(Apoptosis signal-regulating kinase 1) is also named as MAP3K5, MAPKKK5, MEKK5 and belongs to the MAP kinase kinase kinase subfamily. It is an evolutionarily conserved mitogen activated protein 3-kinase that activates both Jnk and p38 mitogen-activated protein kinases. ASK1 is activated in response to various cytotoxic stresses including TNF, Fas and reactive oxygen species (ROS) such as H<sub>2</sub>O<sub>2</sub>, and activates c-Jun NH 2-terminal kinase (JNK) and p38. 67072-1-Ig antibody detects the degraded product of ASK1 in SDS-PAGE.

## Storage

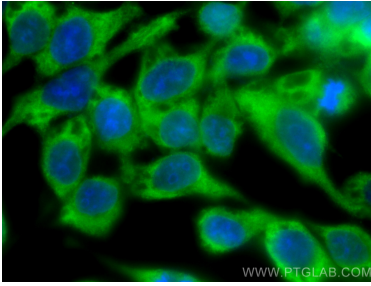
**Storage:**  
Store at -20°C. Avoid exposure to light. Stable for one year after shipment.  
**Storage Buffer:**  
PBS with 50% Glycerol, 0.05% Proclin300, 0.5% BSA, pH 7.3.  
Aliquoting is unnecessary for -20°C storage

**\*\*\* 20ul sizes contain 0.1%BSA**

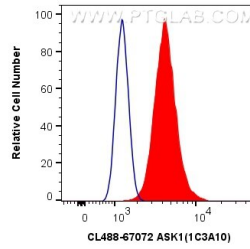
For technical support and original validation data for this product please contact:  
T: 1 (888) 4PTGLAB (1-888-478-4522) (toll free in USA), or 1(312) 455-8498 (outside USA)  
E: proteintech@ptglab.com  
W: ptglab.com

**This product is exclusively available under Proteintech Group brand and is not available to purchase from any other manufacturer.**

## Selected Validation Data



Immunofluorescent analysis of (-20°C Methanol) fixed A431 cells using Coralite® Plus 488 ASK1 antibody (CL488-67072, Clone: 1C3A10) at dilution of 1:200.



1X10<sup>6</sup> A431 cells were intracellularly stained with 0.4 ug Coralite® Plus 488 Anti-Human ASK1 (CL488-67072, Clone:1C3A10) (red), or 0.4 ug Control Antibody. Cells were fixed with 4% PFA and permeabilized with Flow Cytometry Perm Buffer (PF00011-C).