

For Research Use Only

CoraLite® Plus 488-conjugated APBB1 Monoclonal antibody

Catalog Number: CL488-67077



Basic Information

Catalog Number: CL488-67077	GenBank Accession Number: BC010854	Purification Method: Protein G purification
Size: 100ul , Concentration: 1000 ug/ml by Nanodrop;	GeneID (NCBI): 322	CloneNo.: 1B9G10
Source: Mouse	UNIPROT ID: O00213	Recommended Dilutions: IF-P 1:50-1:500
Isotype: IgG1	Full Name: amyloid beta (A4) precursor protein-binding, family B, member 1 (Fe65)	Excitation/Emission maxima wavelengths: 493 nm / 522 nm
Immunogen Catalog Number: AG27436	Calculated MW: 708 aa, 77 kDa	

Applications

Tested Applications: IF-P	Positive Controls: IF-P : mouse brain tissue,
Species Specificity: Human, Mouse, Rat, Pig	

Background Information

APBB1(Amyloid-beta A4 precursor protein-binding family B member 1) encoded FE65 protein. It was known as a binding partner of APP in the Alzheimer's disease studies, and expressed at high levels in brain especially in cerebellum, hippocampus, and cortex. FE65 and FE65-like (FE65L or FE65L1) proteins are cytoplasmic adaptor proteins that possess two phosphotyrosine binding domains (PTB1 and PTB2) and one WW binding domain (PMID:22429478). After phosphorylation modification, the band of FE65 protein would appear around 100 kDa. However, some tested a non-specific band at 55-60 kDa, it was refer to as FE65-like protein(PMID:12843239).

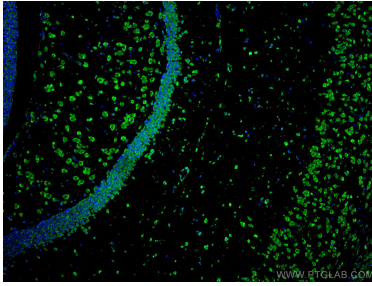
Storage

Storage:
Store at -20°C. Avoid exposure to light. Stable for one year after shipment.
Storage Buffer:
PBS with 50% Glycerol, 0.05% Proclin300, 0.5% BSA, pH 7.3.
Aliquoting is unnecessary for -20°C storage

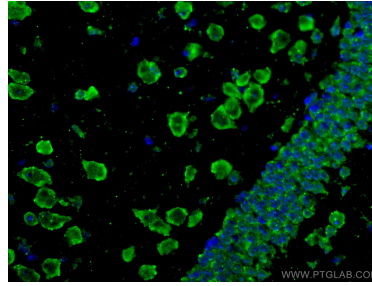
For technical support and original validation data for this product please contact:
T: 1 (888) 4PTGLAB (1-888-478-4522) (toll free in USA), or 1(312) 455-8498 (outside USA)
E: proteintech@ptglab.com
W: ptglab.com

This product is exclusively available under Proteintech Group brand and is not available to purchase from any other manufacturer.

Selected Validation Data



Immunofluorescent analysis of (4% PFA) fixed mouse brain tissue using CoraLite® Plus 488 APBB1 antibody (CL488-67077, Clone: 1B9G10) at dilution of 1:200.



Immunofluorescent analysis of (4% PFA) fixed mouse brain tissue using CoraLite® Plus 488 APBB1 antibody (CL488-67077, Clone: 1B9G10) at dilution of 1:200.