

For Research Use Only

CoraLite® Plus 488-conjugated SDC2 Monoclonal antibody



Catalog Number:CL488-67088

Basic Information

Catalog Number: CL488-67088	GenBank Accession Number: BC049836	Purification Method: Protein A purification
Size: 100ul , Concentration: 1000 µg/ml by Nanodrop;	GeneID (NCBI): 6383	CloneNo.: 3A7B2
Source: Mouse	Full Name: syndecan 2	Recommended Dilutions: WB 1:1000-1:4000
Isotype: IgG2a	Calculated MW: 22 kDa	Excitation/Emission maxima wavelengths: 493 nm / 522 nm
Immunogen Catalog Number: AG5739	Observed MW: 22 kDa	

Applications

Tested Applications: WB	Positive Controls: WB : A549 cells, HuH-7 cells, L02 cells
Species Specificity: Human	

Background Information

SDC2, containing cell surface heparan sulphate proteoglycan, functions as an integral membrane protein and participates in cell proliferation, cell migration, cell adhesion and signal transduction. It has been reported that the expression level of SDC2 will be up-regulated under hypoxia condition which can induce increased release of cytokines and chemokines. Besides, methylated SDC2 can be used as a potential biomarker for early diagnosis of colon cancer. 67088-1-Ig antibody detects the 19 and 22 kDa SDC2 isoforms as well as the 48 kDa dimeric protein in SDS-PAGE.(PMID: 18803305, 23297089, 30022330, 29945573)

Storage

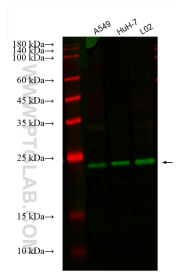
Storage:
Store at -20°C. Avoid exposure to light. Stable for one year after shipment.
Storage Buffer:
PBS with 50% Glycerol, 0.05% Proclin300, 0.5% BSA, pH 7.3.
Aliquoting is unnecessary for -20°C storage

*** 20ul sizes contain 0.1% BSA

For technical support and original validation data for this product please contact:
T: 1 (888) 4PTGLAB (1-888-478-4522) (toll free in USA), or 1(312) 455-8498 (outside USA) E: proteintech@ptglab.com W: ptglab.com

This product is exclusively available under Proteintech Group brand and is not available to purchase from any other manufacturer.

Selected Validation Data



Various lysates were subjected to SDS PAGE followed by western blot with CL488-67088 (SDC2 antibody) at dilution of 1:2000 incubated at room temperature for 1.5 hours.