

For Research Use Only

# CoraLite® Plus 488-conjugated Calpastatin Monoclonal antibody

Catalog Number:CL488-67107



## Basic Information

Catalog Number:

CL488-67107

Size:

100ul , Concentration: 1000 ug/ml by 831

Nanodrop;

Source:

Mouse

Isotype:

IgG1

Immunogen Catalog Number:

AG28669

GenBank Accession Number:

BC013579

GeneID (NCBI):

831

UNIPROT ID:

P20810

Full Name:

calpastatin

Calculated MW:

667 aa, 72 kDa

Purification Method:

Protein G purification

CloneNo.:

1G12A2

Recommended Dilutions:

IF/ICC 1:50-1:500

Excitation/Emission maxima

wavelengths:

493 nm / 522 nm

## Applications

Tested Applications:

IF/ICC, FC (Intra)

Species Specificity:

human

Positive Controls:

IF/ICC : HeLa cells,

## Storage

Storage:

Store at -20°C. Avoid exposure to light. Stable for one year after shipment.

Storage Buffer:

PBS with 50% Glycerol, 0.05% Proclin300, 0.5% BSA, pH 7.3.

Aliquoting is unnecessary for -20°C storage

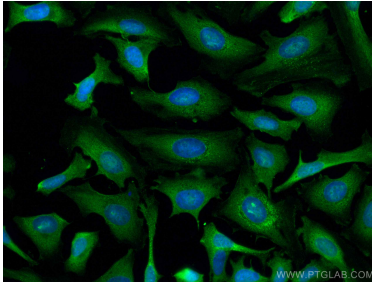
For technical support and original validation data for this product please contact:

T: 1 (888) 4PTGLAB (1-888-478-4522) (toll free  
in USA), or 1(312) 455-8498 (outside USA)

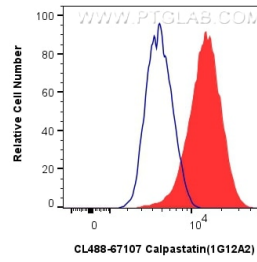
E: [proteintech@ptglab.com](mailto:proteintech@ptglab.com)  
W: [ptglab.com](http://ptglab.com)

This product is exclusively available under Proteintech Group brand and is not available to purchase from any other manufacturer.

## Selected Validation Data



Immunofluorescent analysis of (-20°C Ethanol) fixed HeLa cells using CoraLite® Plus 488 Calpastatin antibody (CL488-67107, Clone: 1G12A2) at dilution of 1:200.



1x10<sup>6</sup> HeLa cells were intracellularly stained with 0.8 ug CoraLite® Plus 488-conjugated Calpastatin Monoclonal antibody (CL488-67107, Clone:1G12A2)(red), or 0.8 ug CoraLite® Plus 488 Mouse IgG1 Isotype Control (1F8D3) (CL488-66360-1, Clone: 1F8D3) (blue). Cells were fixed with 4% PFA and permeabilized with Flow Cytometry Perm Buffer (PF00011-C).