

For Research Use Only

CoraLite® Plus 488-conjugated L1CAM Monoclonal antibody

Catalog Number: CL488-67115

1 Publications



Basic Information

Catalog Number:

CL488-67115

Size:

100ul , Concentration: 1000 ug/ml by Nanodrop;

Source:

Mouse

Isotype:

IgG1

Immunogen Catalog Number:

AG17706

GenBank Accession Number:

BC126229

GeneID (NCBI):

3897

UNIPROT ID:

P32004

Full Name:

L1 cell adhesion molecule

Calculated MW:

1257 aa, 140 kDa

Observed MW:

220 kDa

Purification Method:

Protein G purification

CloneNo.:

3H7B9

Recommended Dilutions:

IF-P 1:50-1:500

Excitation/Emission maxima wavelengths:

493 nm / 522 nm

Applications

Tested Applications:

IF-P

Cited Applications:

IF

Species Specificity:

Human, Pig, Mouse, Rat

Cited Species:

human

Positive Controls:

IF-P : mouse brain tissue,

Background Information

L1CAM, also known as NCAM-L1 or CD171, is a cell adhesion molecule of the immunoglobulin superfamily. It is a 200-220 kDa transmembrane glycoprotein composed of six Ig-like domains and five fibronectin type III repeats followed by a transmembrane region and a highly conserved cytoplasmic tail (PMID: 3412448; 22796939). L1CAM is primarily expressed in the nervous system and is involved in neuron-neuron adhesion, neurite fasciculation, outgrowth of neurites, cerebellar granule cell migration, neurite outgrowth on Schwann cells and interactions among epithelial cells of intestinal crypts (PMID: 3412448; 10767310). L1CAM is overexpressed in many human cancers and is often associated with bad prognosis (PMID: 27267927; 26111503).

Notable Publications

Author	Pubmed ID	Journal	Application
Danyu Li	38898558	J Extracell Vesicles	IF

Storage

Storage:

Store at -20°C. Avoid exposure to light. Stable for one year after shipment.

Storage Buffer:

PBS with 50% Glycerol, 0.05% Proclin300, 0.5% BSA, pH 7.3.

Aliquoting is unnecessary for -20°C storage

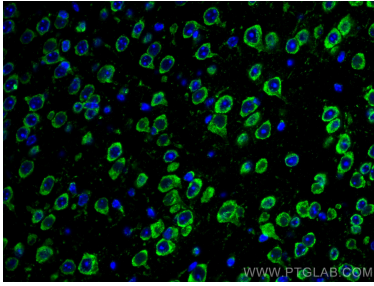
For technical support and original validation data for this product please contact:

T: 1 (888) 4PTGLAB (1-888-478-4522) (toll free in USA), or 1(312) 455-8498 (outside USA)

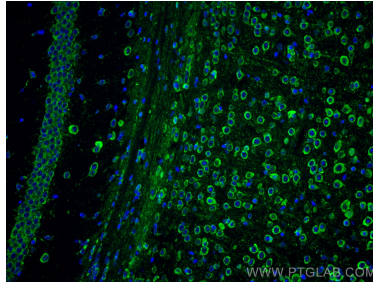
E: proteintech@ptglab.com
W: ptglab.com

This product is exclusively available under Proteintech Group brand and is not available to purchase from any other manufacturer.

Selected Validation Data



Immunofluorescent analysis of (4% PFA) fixed mouse brain tissue using CoraLite® Plus 488 L1CAM antibody (CL488-67115, Clone: 3H7B9) at dilution of 1:200.



Immunofluorescent analysis of (4% PFA) fixed mouse brain tissue using CoraLite® Plus 488 L1CAM antibody (CL488-67115, Clone: 3H7B9) at dilution of 1:200.