

For Research Use Only

CoraLite® Plus 488-conjugated PI3 Kinase p110 Beta Monoclonal antibody



Catalog Number:CL488-67121

Basic Information

Catalog Number: CL488-67121	GenBank Accession Number: BC114432	Purification Method: Protein G purification
Size: 100ul , Concentration: 1000 µg/ml by Nanodrop;	GeneID (NCBI): 5291	CloneNo.: 1B2A1
Source: Mouse	Full Name: phosphoinositide-3-kinase, catalytic, beta polypeptide	Recommended Dilutions: IF 1:50-1:500
Isotype: IgG1	Calculated MW: 1070 aa, 123 kDa	Excitation/Emission maximum wavelengths: 488 nm / 515 nm
Immunogen Catalog Number: AG17505	Observed MW: 120-130 kDa	

Applications

Tested Applications: IF	Positive Controls: IF : HeLa cells,
Species Specificity: Human, Rat	

Background Information

PIK3CB(phosphatidylinositol 4,5-bisphosphate 3-kinase catalytic subunit beta isoform) is also named as PIK3C1, PI3K-beta, p110beta. The gene encodes a 1070 amino acid protein which belongs to the PI3/PI4-kinase family. Phosphoinositide 3-kinases (PI3Ks) have been implicated as participants in signaling pathways regulating cell growth by virtue of their activation in response to various mitogenic stimuli. The class I PI3 kinases are heterodimers composed of 110 kDa catalytic subunits that associate with regulatory adaptor proteins. Four class I catalytic subunits have been identified, PIK3CA (p110 α), PIK3CB (p110 β), PIK3CD (p110 δ) and PIK3CG (p110 γ) (PMID:19177002).

Storage

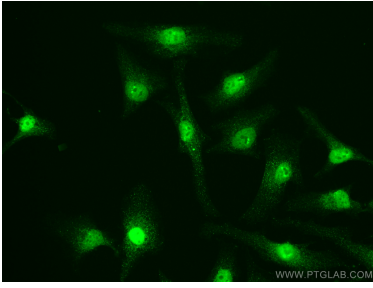
Storage:
Store at -20°C. Avoid exposure to light.
Storage Buffer:
PBS with 50% Glycerol, 0.05% Proclin300, 0.5% BSA, pH 7.3.
Aliquoting is unnecessary for -20°C storage

*** 20ul sizes contain 0.1% BSA

For technical support and original validation data for this product please contact:
T: 1 (888) 4PTGLAB (1-888-478-4522) (toll free in USA), or 1(312) 455-8498 (outside USA) E: proteintech@ptglab.com W: ptglab.com

This product is exclusively available under Proteintech Group brand and is not available to purchase from any other manufacturer.

Selected Validation Data



Immunofluorescent analysis of (4% PFA) fixed HeLa cells using CoraLite® Plus 488 PI3 Kinase p110 Beta antibody (CL488-67121, Clone: 1B2A1) at dilution of 1:200.