

For Research Use Only

CoraLite® Plus 488-conjugated FLNA Monoclonal antibody



Catalog Number: **CL488-67133**

Basic Information

Catalog Number: CL488-67133	GenBank Accession Number: BC014654	Purification Method: Protein A purification
Size: 100ul , Concentration: 1000 µg/ml by Nanodrop;	GeneID (NCBI): 2316	CloneNo.: 1G4H3
Source: Mouse	Full Name: filamin A, alpha (actin binding protein 280)	Recommended Dilutions: IF 1:200-1:800
Isotype: IgG2a	Calculated MW: 2647 aa, 280 kDa	Excitation/Emission maxima wavelengths: 488 nm / 515 nm
Immunogen Catalog Number: AG23291	Observed MW: 280 kDa	

Applications

Tested Applications: IF	Positive Controls: IF : HeLa cells,
Species Specificity: Human	

Background Information

FLNA encodes a 280 kDa widely expressed actin binding protein called filamin A which can crosslinks actin filaments and links actin filaments to membrane glycoproteins to form a three-dimensional network (PMID: 29931263). And filamin A could interact with many other proteins, involved in receptor activation, cell migration and adhesion, cell proliferation, inflammation and tumorigenesis, studies have been reported that FLNA overexpressed in multiple types of tumors, suggesting FLNA may involved in cancer aggressiveness (PMID: 29100390). What's more, FLNA is an causative gene of periventricular nodular heterotopia (PNH) (PMID: 29062687)

Storage

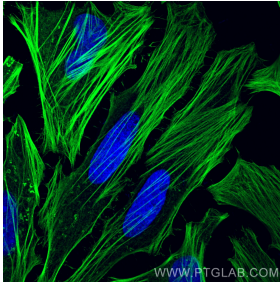
Storage:
Store at -20°C. Avoid exposure to light.
Storage Buffer:
PBS with 50% Glycerol, 0.05% Proclin300, 0.5% BSA, pH 7.3.
Aliquoting is unnecessary for -20°C storage

***** 20ul sizes contain 0.1% BSA**

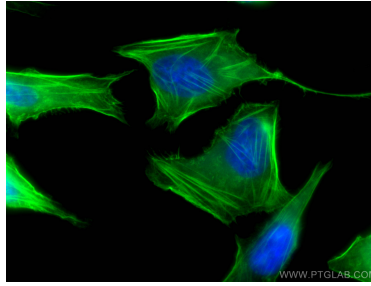
For technical support and original validation data for this product please contact:
T: 1 (888) 4PTGLAB (1-888-478-4522) (toll free in USA), or 1(312) 455-8498 (outside USA)
E: proteintech@ptglab.com
W: ptglab.com

This product is exclusively available under Proteintech Group brand and is not available to purchase from any other manufacturer.

Selected Validation Data



Immunofluorescent analysis of (-20°C Methanol) fixed HeLa cells using CoraLite® Plus 488 FLNA antibody (CL488-67133, Clone: 1G4H3) at dilution of 1:200.



Immunofluorescent analysis of (-20°C Ethanol) fixed HeLa cells using CoraLite® Plus 488-conjugated FLNA antibody (CL488-67133, Clone: 1G4H3) at dilution of 1:400.