

For Research Use Only

# CoraLite® Plus 488-conjugated LOXL2 Monoclonal antibody

Catalog Number:CL488-67139



## Basic Information

Catalog Number:

CL488-67139

Size:

100ul , Concentration: 1000 ug/ml by Nanodrop;

Source:

Mouse

Isotype:

IgG2a

Immunogen Catalog Number:

AG28566

GenBank Accession Number:

BC000594

GeneID (NCBI):

4017

UNIPROT ID:

Q9Y4K0

Full Name:

lysyl oxidase-like 2

Calculated MW:

774 aa, 87 kDa

Observed MW:

100 kDa

Purification Method:

Protein A purification

CloneNo.:

1H7F1

Recommended Dilutions:

WB 1:500-1:1000

Excitation/Emission maxima wavelengths:

493 nm / 522 nm

## Applications

Tested Applications:

WB

Species Specificity:

Human

Positive Controls:

WB : A549 cells, human placenta tissue

## Background Information

LOXL2, also named as W59-14, belongs to an amine oxidase family whose members have been implicated in crosslink formation in stromal collagens and elastin, cell motility, and tumor development and progression. LOXL2 activity might be a crucial modulator of Snail, providing an additional control mechanism of EMT and tumor progression. Increased LOXL2 expression in colon and esophageal cancer may contribute to tumor progression. We detected a band about 100 kd which is a secretory mature LOXL2 protein modified by glycosylation (PMID: 24014025).

## Storage

Storage:

Store at -20°C. Avoid exposure to light. Stable for one year after shipment.

Storage Buffer:

PBS with 50% Glycerol, 0.05% Proclin300, 0.5% BSA, pH 7.3.

Aliquoting is unnecessary for -20°C storage

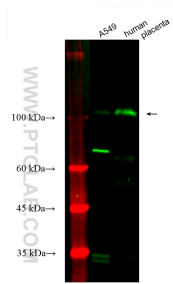
For technical support and original validation data for this product please contact:

T: 1 (888) 4PTGLAB (1-888-478-4522) (toll free in USA), or 1(312) 455-8498 (outside USA)

E: [proteintech@ptglab.com](mailto:proteintech@ptglab.com)  
W: [ptglab.com](http://ptglab.com)

This product is exclusively available under Proteintech Group brand and is not available to purchase from any other manufacturer.

## Selected Validation Data



Various lysates were subjected to SDS PAGE followed by western blot with CL488-67139 (LOXL2 antibody) at dilution of 1:800 incubated at room temperature for 1.5 hours.