

For Research Use Only

CoraLite® Plus 488-conjugated RIAM,APBB1IP Monoclonal antibody

Catalog Number:CL488-67143



Basic Information

Catalog Number:

CL488-67143

Size:

100ul , Concentration: 1000 ug/ml by
Nanodrop;

Source:

Mouse

Isotype:

IgG2a

Immunogen Catalog Number:

AG4602

GenBank Accession Number:

BC035636

GeneID (NCBI):

54518

UNIPROT ID:

Q7Z5R6

Full Name:

amyloid beta (A4) precursor protein-
binding, family B, member 1
interacting protein

Calculated MW:

666 aa, 73 kDa

Observed MW:

100 kDa

Purification Method:

Protein A purification

CloneNo.:

2F8A2

Recommended Dilutions:

IF/ICC 1:50-1:500

Excitation/Emission maxima

wavelengths:

493 nm / 522 nm

Applications

Tested Applications:

IF/ICC

Species Specificity:

Human, Mouse

Positive Controls:

IF/ICC : Jurkat cells,

Background Information

APBB1IP gene encodes a Rap1-GTP-interacting adapter molecule (RIAM) which is an important protein in Rap1-mediated integrin activation and adhesion. Rap1 is a small GTPase frequently activated in tumors such as melanoma and prostate cancer. RIAM is widely expressed with high expression in thymus, spleen, lymph node, bone marrow and peripheral leukocytes. RIAM may function in the signal transduction from Ras activation to actin cytoskeletal remodeling. The observed molecular weight of RIAM is about 100 kDa.

Storage

Storage:

Store at -20°C. Avoid exposure to light. Stable for one year after shipment.

Storage Buffer:

PBS with 50% Glycerol, 0.05% Proclin300, 0.5% BSA, pH 7.3.

Aliquoting is unnecessary for -20°C storage

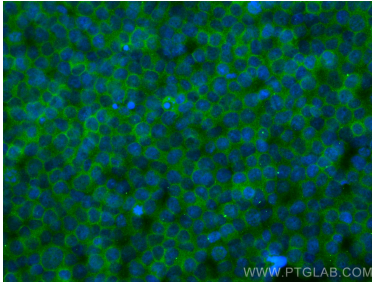
For technical support and original validation data for this product please contact:

T: 1 (888) 4PTGLAB (1-888-478-4522) (toll free
in USA), or 1(312) 455-8498 (outside USA)

E: proteintech@ptglab.com
W: ptglab.com

This product is exclusively available under Proteintech Group brand and is not available to purchase from any other manufacturer.

Selected Validation Data



Immunofluorescent analysis of (4% PFA) fixed Jurkat cells using CoraLite® Plus 488 RIAM,APBB1P antibody (CL488-67143, Clone: 2F8A2) at dilution of 1:200.