

For Research Use Only

CoraLite® Plus 488-conjugated FXVD1 Monoclonal antibody



Catalog Number: **CL488-67150**

Basic Information

Catalog Number: CL488-67150	GenBank Accession Number: BC032800	Purification Method: Protein A purification
Size: 100ul , Concentration: 1000 µg/ml by Nanodrop;	GeneID (NCBI): 5348	CloneNo.: 2C10G9
Source: Mouse	Full Name: FXVD domain containing ion transport regulator 1	Excitation/Emission maxima wavelengths: 493 nm / 522 nm
Isotype: IgG2a	Calculated MW: 92 aa, 10 kDa	
Immunogen Catalog Number: AG25307	Observed MW: 15 kDa	

Applications

Tested Applications:
FC (Intra)

Species Specificity:
Human, Pig, mouse

Background Information

FXVD1, also named as PLM and Phospholemman, belongs to the FXVD family. FXVD1 induces a hyperpolarization-activated chloride current when expressed in *Xenopus* oocytes. It may have a functional role in muscle contraction. FXVD1 is a partner protein and regulator of the Na⁺,K⁺-ATPase (Na⁺,K⁺-pump). It may play a role in the acute regulation of the Na⁺,K⁺-ATPase response to exercise. (PMID: 20595385, 21653224)

Storage

Storage:
Store at -20°C. Avoid exposure to light. Stable for one year after shipment.

Storage Buffer:
PBS with 50% Glycerol, 0.05% Proclin300, 0.5% BSA, pH 7.3.

Aliquoting is unnecessary for -20°C storage

***** 20ul sizes contain 0.1%BSA**

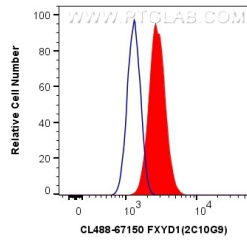
For technical support and original validation data for this product please contact:

T: 1 (888) 4PTGLAB (1-888-478-4522) (toll free
in USA), or 1(312) 455-8498 (outside USA)

E: proteintech@ptglab.com
W: ptglab.com

This product is exclusively available under Proteintech Group brand and is not available to purchase from any other manufacturer.

Selected Validation Data



1X10⁶ C2C12 cells were intracellularly stained with 0.8 ug CoraLite® Plus 488 Anti-Human FXYD1 (CL488-67150, Clone:2C10G9) (red), or 0.8 ug Control Antibody. Cells were fixed with 4% PFA and permeabilized with Flow Cytometry Perm Buffer (PF00011-C).