

For Research Use Only

# CoraLite® Plus 488-conjugated GBP1 Monoclonal antibody



Catalog Number:CL488-67161

## Basic Information

<b>Catalog Number:</b> CL488-67161	<b>GenBank Accession Number:</b> BC002666	<b>Purification Method:</b> Protein A purification
<b>Size:</b> 100ul , Concentration: 1000 µg/ml by Nanodrop;	<b>GeneID (NCBI):</b> 2633	<b>CloneNo.:</b> 2A10E8
<b>Source:</b> Mouse	<b>Full Name:</b> GTP binding protein 1	<b>Recommended Dilutions:</b> IF 1:50-1:500
<b>Isotype:</b> IgG2b	<b>Calculated MW:</b> 68 kDa	<b>Excitation/Emission maxima wavelengths:</b> 493 nm / 522 nm
<b>Immunogen Catalog Number:</b> AG7767	<b>Observed MW:</b> 68 kDa	

## Applications

<b>Tested Applications:</b> IF	<b>Positive Controls:</b> IF : MCF-7 cells,
<b>Species Specificity:</b> Human, pig, rat	

## Background Information

Guanylate binding protein 1 (GBP1) belongs to the dynamin superfamily of large GTPases. The expression of GBP1 is induced by IFN and GBP1 is characterized by its ability to specifically bind guanine nucleotides such as GMP, GDP, and GTP and its ability to hydrolyze GTP to GDP and GMP. GBP1 is induced in response to type I and type II IFNs and as such plays a role in protective immunity against a spectrum of intracellular pathogens ranging from viruses to bacteria to protozoa, such as negative-strand RNA Rhabdovirus, vesicular stomatitis virus and the positive-strand RNA Picornavirus, encephalomyocarditis virus in cultured cells, the inhibition of Chlamydia trachomatis, Toxoplasma gondii, and Salmonella enterica.

## Storage

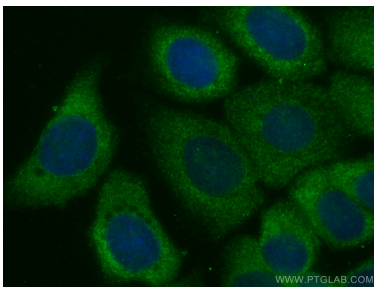
**Storage:**  
Store at -20°C. Avoid exposure to light. Stable for one year after shipment.  
**Storage Buffer:**  
PBS with 50% Glycerol, 0.05% Proclin300, 0.5% BSA, pH 7.3.  
Aliquoting is unnecessary for -20°C storage

\*\*\* 20ul sizes contain 0.1% BSA

For technical support and original validation data for this product please contact:  
T: 1 (888) 4PTGLAB (1-888-478-4522) (toll free in USA), or 1(312) 455-8498 (outside USA) E: proteintech@ptglab.com W: ptglab.com

This product is exclusively available under Proteintech Group brand and is not available to purchase from any other manufacturer.

## Selected Validation Data



Immunofluorescent analysis of (-20°C Methanol) fixed MCF-7 cells using CoraLite® Plus 488 GBP1 antibody (CL488-67161, Clone: 2A10E8) at dilution of 1:100.